

MERIDIAN

2013



CLICK TO NAVIGATE

[Overview](#)

[Lounge](#)

[Dining](#)

[Cab](#)

[SuperStructure](#)

[Floorplans](#)

[Paint](#)

[WIT Club](#)

[Features](#)

[Kitchen](#)

[Bedroom | Bath](#)

[Exterior](#)

[Chassis](#)

[Interior Décor](#)

[Specifications](#)

[Warranty](#)

MERIDIAN

2013



CLICK TO NAVIGATE

Overview	Lounge	Dining	Cab	SuperStructure	Floorplans	Paint	WIT Club
Features	Kitchen	Bedroom Bath	Exterior	Chassis	Interior Décor	Specifications	Warranty



ON THE COVER: 42E Light Sandalwood Full-Body Paint

42E Opal with Forest Cherry Cabinetry

YOUR DIESEL PUSHER HAS ARRIVED

Step inside a 2013 Itasca Meridian® and you'll immediately notice its array of eye-catching amenities such as Corian® solid-surface countertops, Ultraleather™ furniture and hardwood cabinetry in your choice of Honey Cherry, Forest Cherry or Coffee-Glazed Vienna Maple finishes. But take it on the road and you'll truly begin to appreciate what you can't see: the incomparable smooth ride and performance of the Freightliner®-based Maxum Chassis®. And, perhaps best of all, you won't have to leave anything behind, thanks to its lowered-rail chassis design that creates up to 246 cubic feet of storage. New exterior styling, four floorplans and the legendary integrity of our SuperStructure® construction process makes the Meridian a top choice for diesel pusher enthusiasts.

Why Meridian?

- Premier clearcoat automotive finish
- Unmatched performance of Maxum Chassis
- Full-wall, triple or quad slideouts
- Ultraleather power cab seats
- Corian countertops
- Extendable sectional sofa (NA 36M)
- Expansive exterior storage
- MCD American Duo® solar/blackout roller shades
- TrueAir® Maximum Comfort Air Conditioning
- PowerLine® Energy Management System
- Extendable dining table with buffet



RECOGNIZED QUALITY The RV Dealers Association annually bestows the Quality Circle Award based on dealer ratings to manufacturers that provide exceptional products, service and support. Only one manufacturer has received this award for sixteen consecutive years: Winnebago Industries,® proud manufacturer of the Itasca Meridian.



ON THE COVER: 42E Light Sandalwood Full-Body Paint

42E Opal with Forest Cherry Cabinetry

YOUR DIESEL PUSHER HAS ARRIVED

Step inside a 2013 Itasca Meridian® and you'll immediately notice its array of eye-catching amenities such as Corian® solid-surface countertops, Ultraleather™ furniture and hardwood cabinetry in your choice of Honey Cherry, Forest Cherry or Coffee-Glazed Vienna Maple finishes. But take it on the road and you'll truly begin to appreciate what you can't see: the incomparable smooth ride and performance of the Freightliner®-based Maxum Chassis®. And, perhaps best of all, you won't have to leave anything behind, thanks to its lowered-rail chassis design that creates up to 246 cubic feet of storage. New exterior styling, four floorplans and the legendary integrity of our SuperStructure® construction process makes the Meridian a top choice for diesel pusher enthusiasts.

Why Meridian?

- Premier clearcoat automotive finish
- Unmatched performance of Maxum Chassis
- Full-wall, triple or quad slideouts
- Ultraleather power cab seats
- Corian countertops
- Extendable sectional sofa (NA 36M)
- Expansive exterior storage
- MCD American Duo® solar/blackout roller shades
- TrueAir® Maximum Comfort Air Conditioning
- PowerLine® Energy Management System
- Extendable dining table with buffet



RECOGNIZED QUALITY The RV Dealers Association annually bestows the Quality Circle Award based on dealer ratings to manufacturers that provide exceptional products, service and support. Only one manufacturer has received this award for sixteen consecutive years: Winnebago Industries®, proud manufacturer of the Itasca Meridian.

BEST IN CLASS

See how Winnebago Industries takes motor home design and function to the next level, and why we've earned the right to be called the Most Recognized Name in Motor Homes.®



Click on this icon throughout the brochure to link to more information on the web.



The **Rest Easy® Extendable Sectional Sofa** glides from a sofa to a lounge to a bed at the press of a button (40U, 42E).



No more cramped showers—the **BIG Shower** is residential-sized with a wide opening for maximum function and comfort (40U, 42E).



The color-coded **Exterior Service Center** with QuickPort® service connection hatch will have you set up at the campsite in no time.



Day or night, the smoothly retracting **MCD American Duo® Solar/Blackout Roller Shades** give you total control of light and privacy levels.

TRUEAIR





TrueAir® Maximum Comfort A/C Up to three high-efficiency, low-profile, roof-mount cooling units and precision engineered ducting deliver unsurpassed cooling power.

- D-shaped, formed ductwork optimizes airflow
- No roof top condensation drips
- Dual or triple-zone thermostats offer precision cooling
- Designed to maximize coach comfort
- Infinitely adjustable ceiling vents provide finite control



BEST IN CLASS

See how Winnebago Industries takes motor home design and function to the next level, and why we've earned the right to be called the Most Recognized Name in Motor Homes.®



Click on this icon throughout the brochure to link to more information on the web.



The **Rest Easy® Extendable Sectional Sofa** glides from a sofa to a lounge to a bed at the press of a button (40U, 42E).



No more cramped showers—the **BIG Shower** is residential-sized with a wide opening for maximum function and comfort (40U, 42E).



The color-coded **Exterior Service Center** with QuickPort® service connection hatch will have you set up at the campsite in no time.



Day or night, the smoothly retracting **MCD American Duo® Solar/Blackout Roller Shades** give you total control of light and privacy levels.

TRUEAIR

TrueAir® Maximum Comfort A/C Up to three high-efficiency, low-profile, roof-mount cooling units and precision engineered ducting deliver unsurpassed cooling power.

- D-shaped, formed ductwork optimizes airflow
- No roof top condensation drips
- Dual or triple-zone thermostats offer precision cooling
- Designed to maximize coach comfort
- Infinitely adjustable ceiling vents provide finite control



42E Opal with Forest Cherry Cabinetry

An expansive living area filled with soft, Ultraleather furniture and a state-of-the-art Blu-Ray® entertainment system welcomes you to your new home on the road. The HDMI 4x4 Matrix video selection system lets you enjoy HD programming from multiple sources on multiple TVs simultaneously. We pay close attention to detail, as evidenced by the tray ceiling with crown molding. To top it off, the TrueAir Maximum Comfort air conditioning ensures your Meridian remains a true sanctuary in any climate.



HDMI 4x4 Matrix Video Selection System



Euro Recliner



+Lounger with Workstation



42E Opal with Forest Cherry Cabinetry

An expansive living area filled with soft, Ultraleather furniture and a state-of-the-art Blu-Ray® entertainment system welcomes you to your new home on the road. The HDMI 4x4 Matrix video selection system lets you enjoy HD programming from multiple sources on multiple TVs simultaneously. We pay close attention to detail, as evidenced by the tray ceiling with crown molding. To top it off, the TrueAir Maximum Comfort air conditioning ensures your Meridian remains a true sanctuary in any climate.



HDMI 4x4 Matrix Video Selection System



Euro Recliner



+Lounge with Workstation



42E Kitchen

Explore your culinary side in a delightful kitchen with ample workspace provided by Corian solid-surface countertops and a pull-out island. The microwave/convection oven will be your best friend in the kitchen, cooking and browning like an oven while saving you time and space. For the finishing touch, go all out by selecting the residential stainless steel French door refrigerator.



42E Pantry



Available French Door Refrigerator



Full-Extension Drawer Slides



42E Pullout Storage Trays



42E Kitchen

Explore your culinary side in a delightful kitchen with ample workspace provided by Corian solid-surface countertops and a pull-out island. The microwave/convection oven will be your best friend in the kitchen, cooking and browning like an oven while saving you time and space. For the finishing touch, go all out by selecting the residential stainless steel French door refrigerator.



42E Pantry



Available French Door Refrigerator



Full-Extension Drawer Slides



42E Pullout Storage Trays

Savor every bite as you enjoy elegant meals in the extendable dining table/buffet. The table top quickly expands to seat guests. The buffet includes a retractable LCD TV in the 34B.



42E Dining Table/Buffer

Savor every bite as you enjoy elegant meals in the extendable dining table/buffet. The table top quickly expands to seat guests. The buffet includes a retractable LCD TV in the 34B.



42E Dining Table/Bufferet



42E Powered Bed

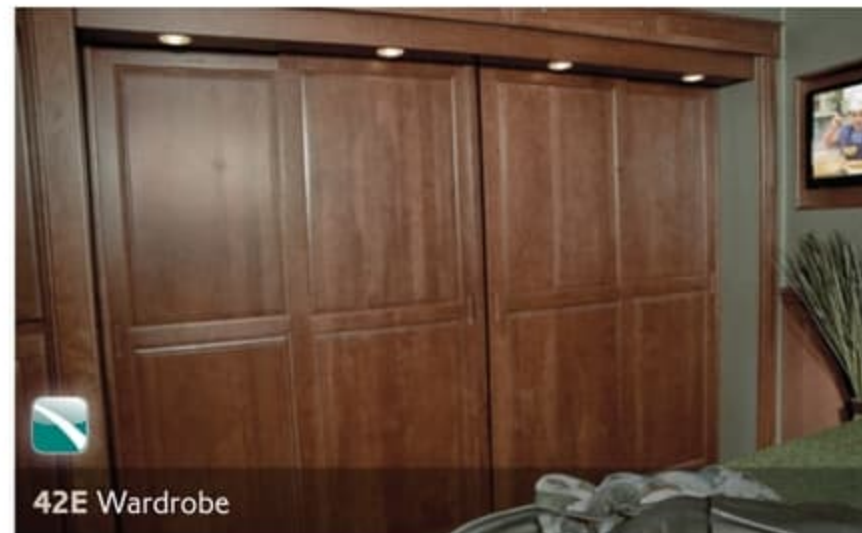
Get the best night's sleep you've ever had in the power bed with Ideal Rest® Natural Reserve digital comfort control mattress, which is standard in the 42E and available in all other floorplans. Not only can you adjust the firmness of each side of the mattress independently, it features natural cotton and bamboo fibers and a duo-firmness memory-cell insert for even more adjustable comfort. The power bed adjusts into perfect position for reading or watching television.



42E Master Bathroom



42E Guest Bathroom



42E Wardrobe



42E Powered Bed

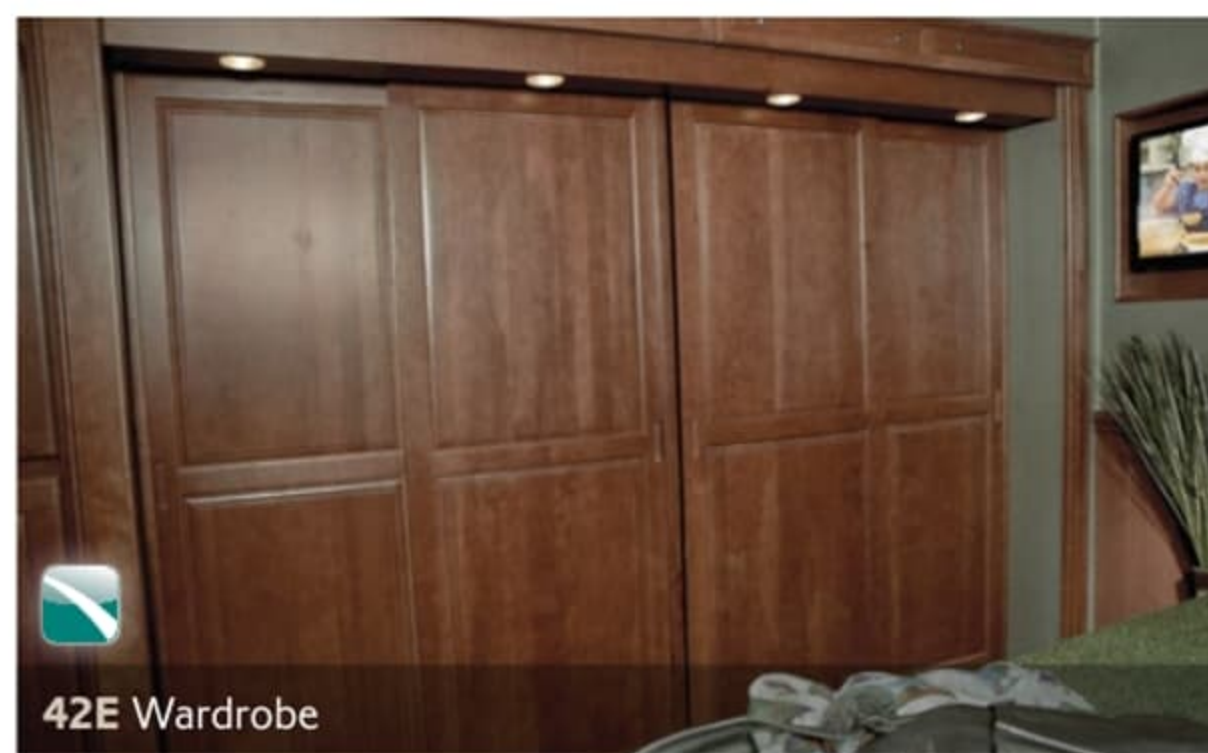
Get the best night's sleep you've ever had in the power bed with Ideal Rest® Natural Reserve digital comfort control mattress, which is standard in the 42E and available in all other floorplans. Not only can you adjust the firmness of each side of the mattress independently, it features natural cotton and bamboo fibers and a duo-firmness memory-cell insert for even more adjustable comfort. The power bed adjusts into perfect position for reading or watching television.



42E Master Bathroom



42E Guest Bathroom



42E Wardrobe



Dash

What makes the Meridian such a smooth ride? Is it the uncompromised performance of the Maxum Chassis? Is it the lush comfort of power-adjustable Ultraleather cab seats? Or is it simply the peace of mind you get from having a rearview monitor, sideview cameras and voice navigation at your fingertips on the available Infotainment Center/GPS? Yes, yes and yes.



Infotainment Center/GPS



Powered Front Shades



Powered Mirrors



Dash

What makes the Meridian such a smooth ride? Is it the uncompromised performance of the Maxum Chassis? Is it the lush comfort of power-adjustable Ultraleather cab seats? Or is it simply the peace of mind you get from having a rearview monitor, sideview cameras and voice navigation at your fingertips on the available Infotainment Center/GPS? Yes, yes and yes.



Infotainment Center/GPS



Powered Front Shades



Powered Mirrors

With the Maxum Chassis as your foundation, you'll have plenty of storage space to avoid those tough decisions about "what to leave behind." Add the sliding storage tray for easy access to all your gear from both sides of the coach. Get set up quickly with a color-coded service center and enjoy the extra time you have with the 32" LCD TV in the available exterior entertainment center.



Powered Awning



Stylized Aluminum Wheels



Sliding Storage Tray



Available Exterior Entertainment Center

With the Maxum Chassis as your foundation, you'll have plenty of storage space to avoid those tough decisions about "what to leave behind." Add the sliding storage tray for easy access to all your gear from both sides of the coach. Get set up quickly with a color-coded service center and enjoy the extra time you have with the 32" LCD TV in the available exterior entertainment center.



Fiberglass Roof The crowned, one-piece fiberglass roof is backed by a 10-year parts-and-labor roof skin warranty.

Thermo-Panel® Sidewalls By layering fiberglass and high-density block foam insulation with welded aluminum support structures, we create some of the industry's strongest, most durable and lightweight sidewalls.

E-Coating An electrodeposition coating helps protect critical steel components.

Embedded Steel Metal substructures embedded into the sidewall provide solid attachment points to keep cabinets and appliances mounted securely in place.

Solid Framework Aluminum extruded in our own facility to our exacting standards creates an extremely strong and solid structural framework.

Laser-Cut Tubing Precision laser cutters create precise joints in structural steel that are stronger and require less welding.



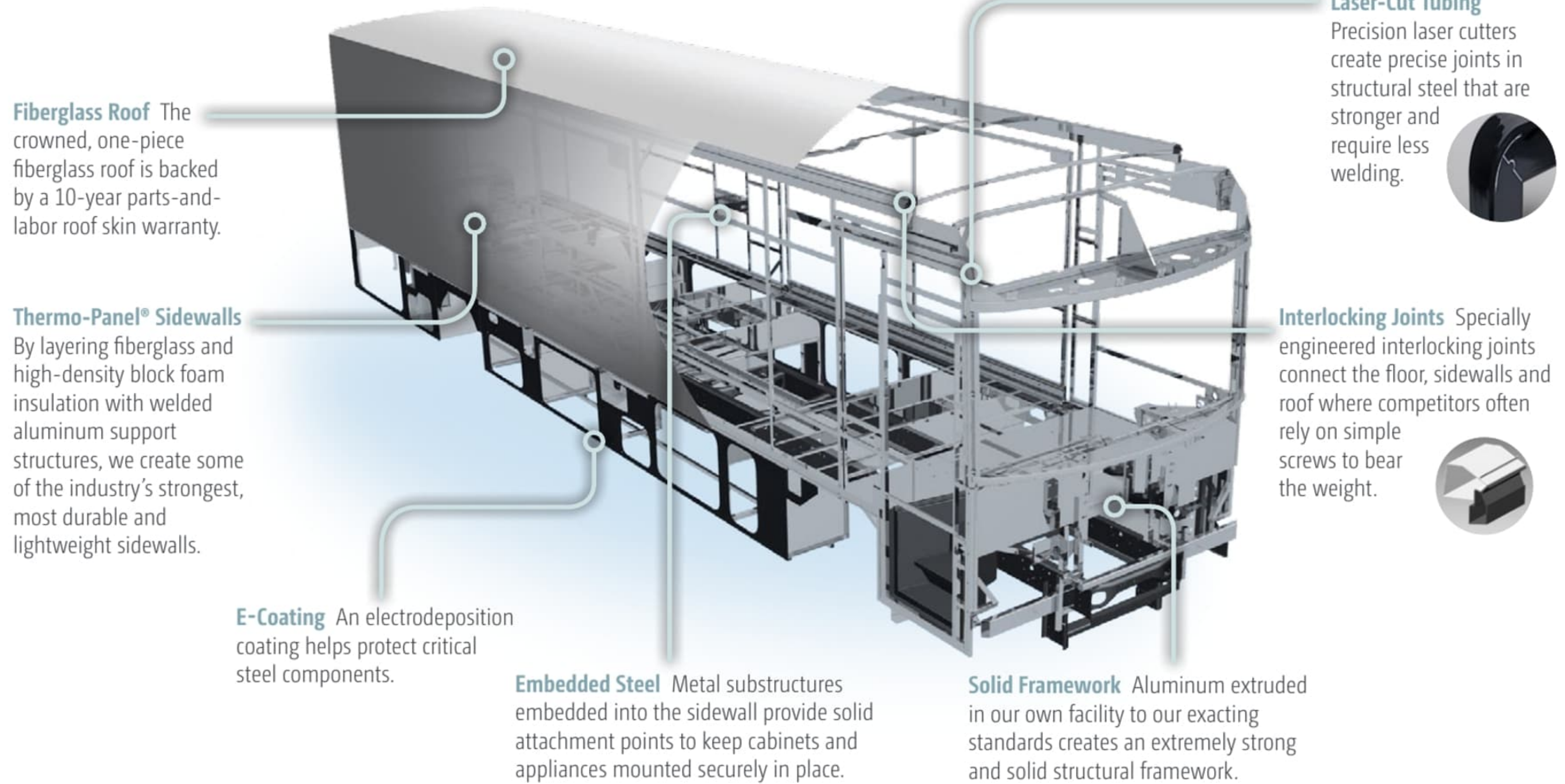
Interlocking Joints Specially engineered interlocking joints connect the floor, sidewalls and roof where competitors often rely on simple screws to bear the weight.



SUPER STRUCTURE

BUILT TO LAST

Every Meridian is built to Winnebago Industries'® legendary SuperStructure construction standards. It's a process developed and refined over more than 50 years of building some of the strongest, most durable coaches in the industry.



Fiberglass Roof The crowned, one-piece fiberglass roof is backed by a 10-year parts-and-labor roof skin warranty.

Thermo-Panel® Sidewalls By layering fiberglass and high-density block foam insulation with welded aluminum support structures, we create some of the industry's strongest, most durable and lightweight sidewalls.

E-Coating An electrodeposition coating helps protect critical steel components.

Embedded Steel Metal substructures embedded into the sidewall provide solid attachment points to keep cabinets and appliances mounted securely in place.

Solid Framework Aluminum extruded in our own facility to our exacting standards creates an extremely strong and solid structural framework.

Laser-Cut Tubing Precision laser cutters create precise joints in structural steel that are stronger and require less welding.



Interlocking Joints Specially engineered interlocking joints connect the floor, sidewalls and roof where competitors often rely on simple screws to bear the weight.

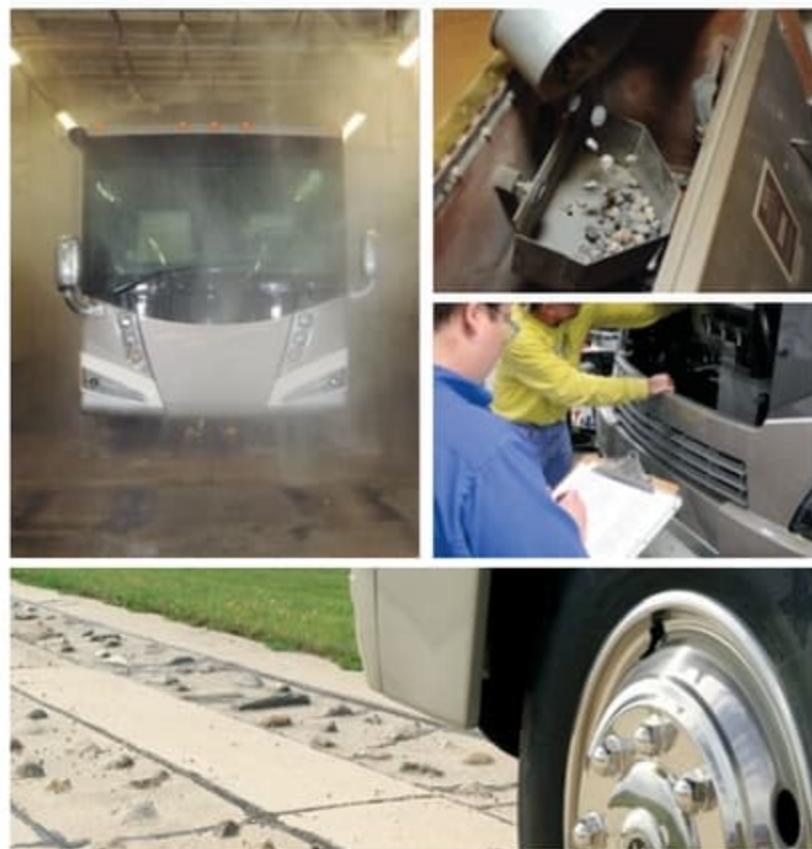


SUPER STRUCTURE

BUILT TO LAST

Every Meridian is built to Winnebago Industries'® legendary SuperStructure construction standards. It's a process developed and refined over more than 50 years of building some of the strongest, most durable coaches in the industry.

TESTING Before rolling out of our factories, every coach undergoes an extensive 113-point inspection. Each coach also passes a high-pressure water test that simulates rain at a rate of 50-inches per hour to check for leaks. During the design process, computer simulations, our physical testing center and rigorous test track ensure each model is built to last.



DETAILS At Winnebago Industries, we treat the features you can't see with the same care as the ones you can. Look in the access panels of some of our competitors' coaches and you'll see loose insulation and wires haphazardly strewn about. Winnebago Industries maintains a clean fit and finish throughout so your coach will last for the long haul.



BUILT IN-HOUSE We extrude our own aluminum. We rotocast our own plastic components. In fact, we manufacture most of our own parts so they are designed to fit the space, rather than fitting the space to an awkward off-the-shelf component size.



**SUPER
STRUCTURE**
BUILT TO LAST

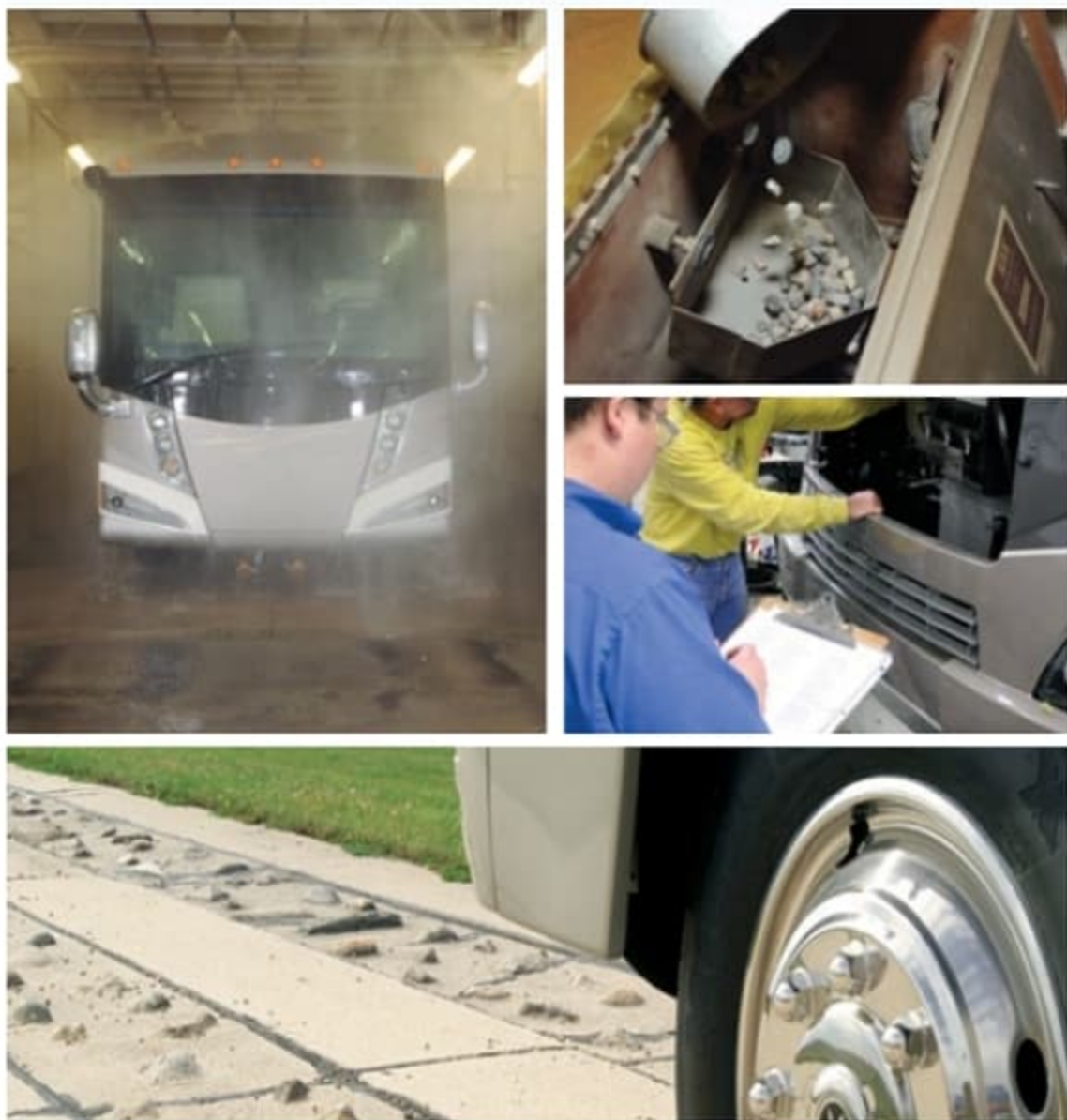
Visit BetterBuiltRVs.com to gain real insight into what goes into a Winnebago Industries motor home.

TAKE A TOUR We're proud of our processes, state-of-the-art facilities and the people who make Winnebago Industries number one. We invite you to visit our complex in Forest City, Iowa, for a first-hand look at the dedication and technology behind every motor home we build.



TESTING

Before rolling out of our factories, every coach undergoes an extensive 113-point inspection. Each coach also passes a high-pressure water test that simulates rain at a rate of 50-inches per hour to check for leaks. During the design process, computer simulations, our physical testing center and rigorous test track ensure each model is built to last.



DETAILS

At Winnebago Industries, we treat the features you can't see with the same care as the ones you can. Look in the access panels of some of our competitors' coaches and you'll see loose insulation and wires haphazardly strewn about. Winnebago Industries maintains a clean fit and finish throughout so your coach will last for the long haul.



BUILT IN-HOUSE

We extrude our own aluminum. We rotocast our own plastic components. In fact, we manufacture most of our own parts so they are designed to fit the space, rather than fitting the space to an awkward off-the-shelf component size.



SUPER STRUCTURE

BUILT TO LAST

Visit BetterBuiltRVs.com to gain real insight into what goes into a Winnebago Industries motor home.

TAKE A TOUR

We're proud of our processes, state-of-the-art facilities and the people who make Winnebago Industries number one. We invite you to visit our complex in Forest City, Iowa, for a first-hand look at the dedication and technology behind every motor home we build.



3-point engine mounting reduces engine vibration.

Engine brake uses the engine to slow the coach, promoting longer brake life.

Allison® 3000 MH 6-speed automatic transmission includes a touchpad control for ease of use (Allison 2500 MH on 34B).

Rear axle incorporates proprietary gear machining for a smoother, quieter ride.

NeWay® rear air suspension provides superior ride and handling.

The lowered-rail design moves intrusive rails from storage areas, creating up to 246 cubic feet of storage.

Taller, 23.25" pass-through storage height accommodates bulky items compared to 19.5" similar raised-rail and 17" on a typical raised-rail.

Extra space in critical areas allows for more pass-through storage.

55° wheel cut provides a tighter turning radius and better maneuvering.

Color-coded air lines make service easy.

10,000-pound trailer hitch® (34B, 36M, 40U); 15,000-pound trailer hitch® (42E)

"Clean Air Diesel" Cummins® engine delivers hill-climbing power when you need it most:

- Cummins ISB 6.7L 340-hp (34B)
- Cummins ISB XT 6.7L 360-hp (36M)
- Cummins ISC 8.3L 380-hp (40U)
- Cummins ISL 8.9L 400-hp (42E)

Low frame rails create a lower center of gravity improving stability.

Winnebago Industries' SuperStructure integrated with the lowered-rail design creates a chassis that is seven times stronger than typical raised-rail chassis designs.

Dual-fill fuel tank.

MAXUM CHASSIS

A True Work of Art

You may not be able to see the Freightliner® Maxum Chassis as you're driving through the Rockies, but you'll know it's there. Its powerful Cummins turbo-charged diesel engine and Allison® transmission go to work so you don't have to sweat the peaks and valleys ahead.

Through a strong partnership with Freightliner, the undisputed leader in diesel motor home

chassis, we set a new standard for handling, ride and performance in diesel chassis design.

But performance doesn't mean sacrificing storage. The innovative lowered-rail design of the Maxum Chassis opens up a cavernous basement storage compartment, offering up to 246 cubic feet of storage.

4-wheel ABS anti-lock air brakes provide fast stopping power.

Michelin® tires and polished aluminum wheels look sharp.

MAXUM CHASSIS

3-point engine mounting reduces engine vibration.

Engine brake uses the engine to slow the coach, promoting longer brake life.

Allison® 3000 MH 6-speed automatic transmission includes a touchpad control for ease of use (Allison 2500 MH on 34B).

Rear axle incorporates proprietary gear machining for a smoother, quieter ride.

NeWay® rear air suspension provides superior ride and handling.

The lowered-rail design moves intrusive rails from storage areas, creating up to 246 cubic feet of storage.

Taller, 23.25" pass-through storage height accommodates bulky items compared to 19.5" similar raised-rail and 17" on a typical raised-rail.

Extra space in critical areas allows for more pass-through storage.

55° wheel cut provides a tighter turning radius and better maneuvering.

Color-coded air lines make service easy.

10,000-pound trailer hitch® (34B, 36M, 40U); 15,000-pound trailer hitch® (42E)

"Clean Air Diesel" Cummins® engine delivers hill-climbing power when you need it most:

- Cummins ISB 6.7L 340-hp (34B)
- Cummins ISB XT 6.7L 360-hp (36M)
- Cummins ISC 8.3L 380-hp (40U)
- Cummins ISL 8.9L 400-hp (42E)

Low frame rails create a lower center of gravity improving stability.

Winnebago Industries' SuperStructure integrated with the lowered-rail design creates a chassis that is seven times stronger than typical raised-rail chassis designs.

Dual-fill fuel tank.

A True Work of Art

You may not be able to see the Freightliner® Maxum Chassis as you're driving through the Rockies, but you'll know it's there. Its powerful Cummins turbo-charged diesel engine and Allison® transmission go to work so you don't have to sweat the peaks and valleys ahead.

Through a strong partnership with Freightliner, the undisputed leader in diesel motor home

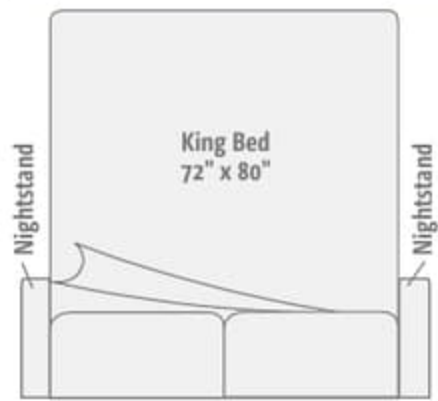
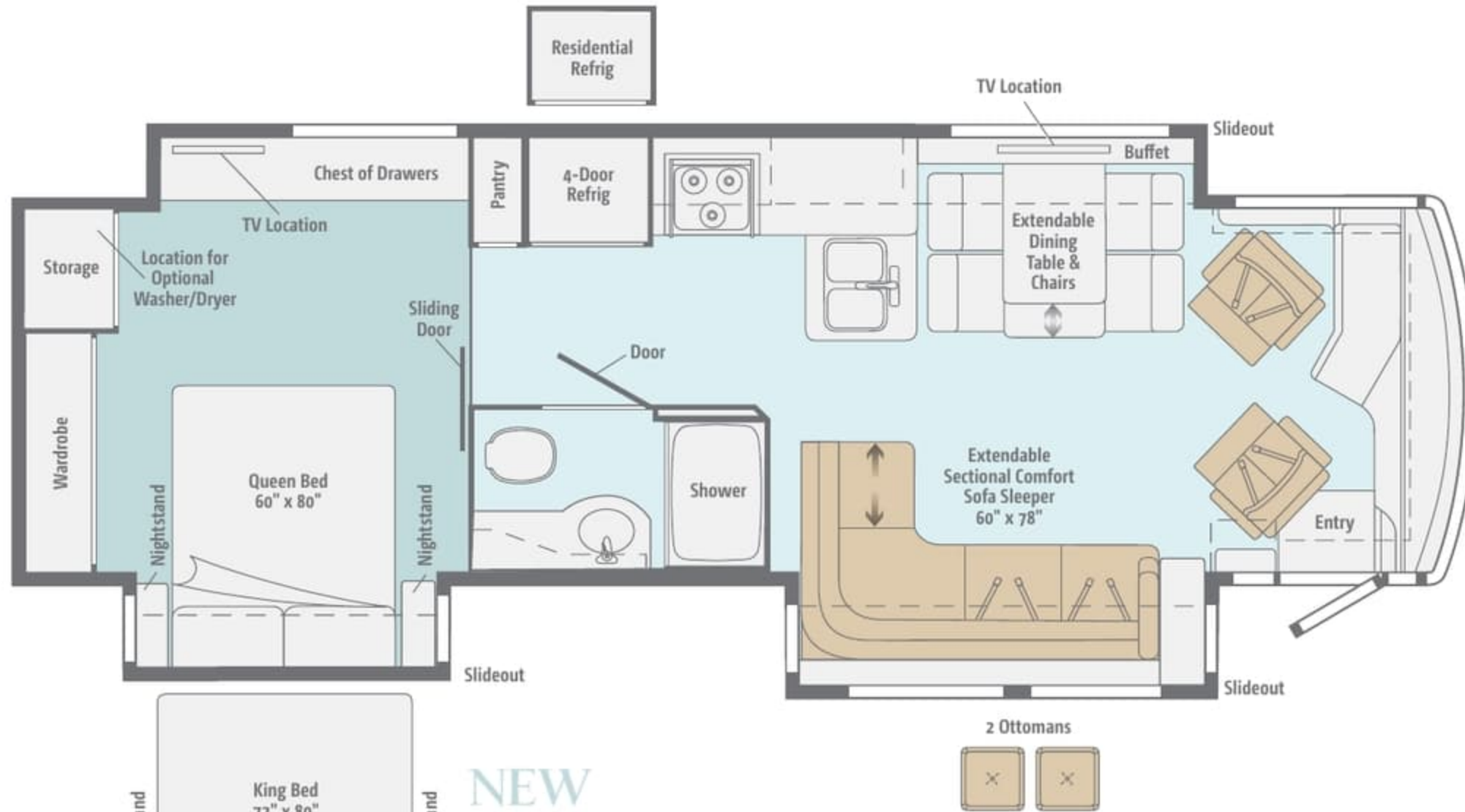
chassis, we set a new standard for handling, ride and performance in diesel chassis design.

But performance doesn't mean sacrificing storage. The innovative lowered-rail design of the Maxum Chassis opens up a cavernous basement storage compartment, offering up to 246 cubic feet of storage.

4-wheel ABS anti-lock air brakes provide fast stopping power.

Michelin® tires and polished aluminum wheels look sharp.

Dimensions shown are for sleeping space only and may vary due to styling differences. Dashed lines denote overhead storage areas. Floorplans and specifications are also available online at Goltasca.com.

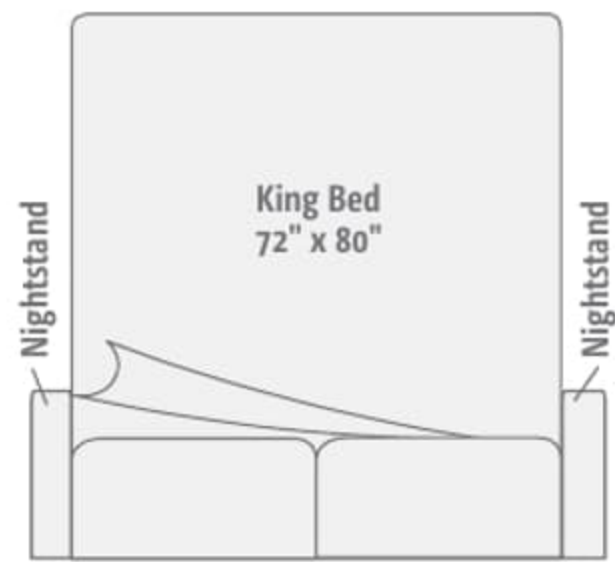
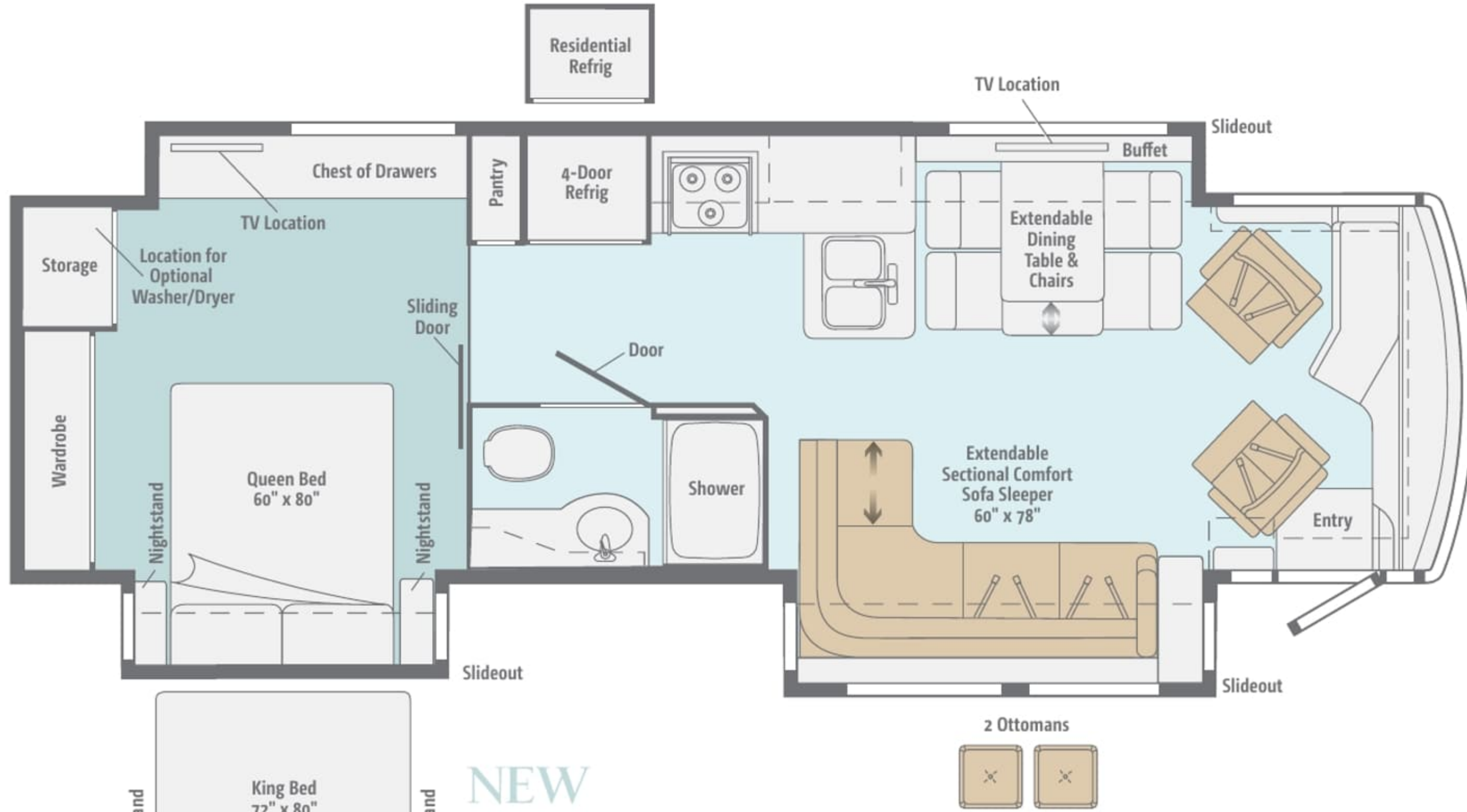


NEW 34B

The newest Meridian floorplan brings you the extendable sectional Comfort Sofa Sleeper and incredible spaciousness thanks to triple slideouts.



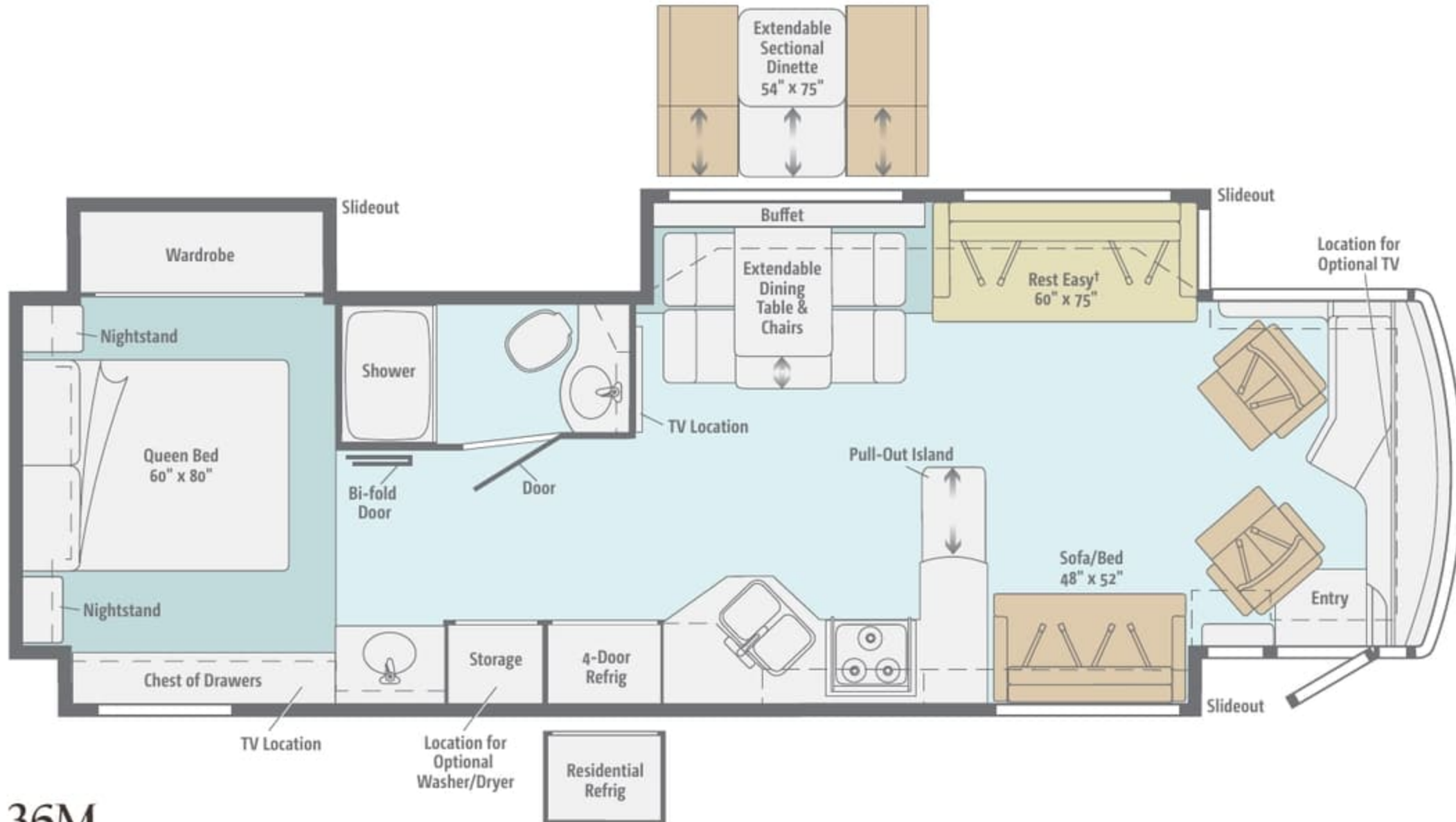
Dimensions shown are for sleeping space only and may vary due to styling differences. Dashed lines denote overhead storage areas. Floorplans and specifications are also available online at Goltasca.com.



NEW 34B

The newest Meridian floorplan brings you the extendable sectional Comfort Sofa Sleeper and incredible spaciousness thanks to triple slideouts.

Dimensions shown are for sleeping space only and may vary due to styling differences. Dashed lines denote overhead storage areas. Floorplans and specifications are also available online at Goltasca.com.

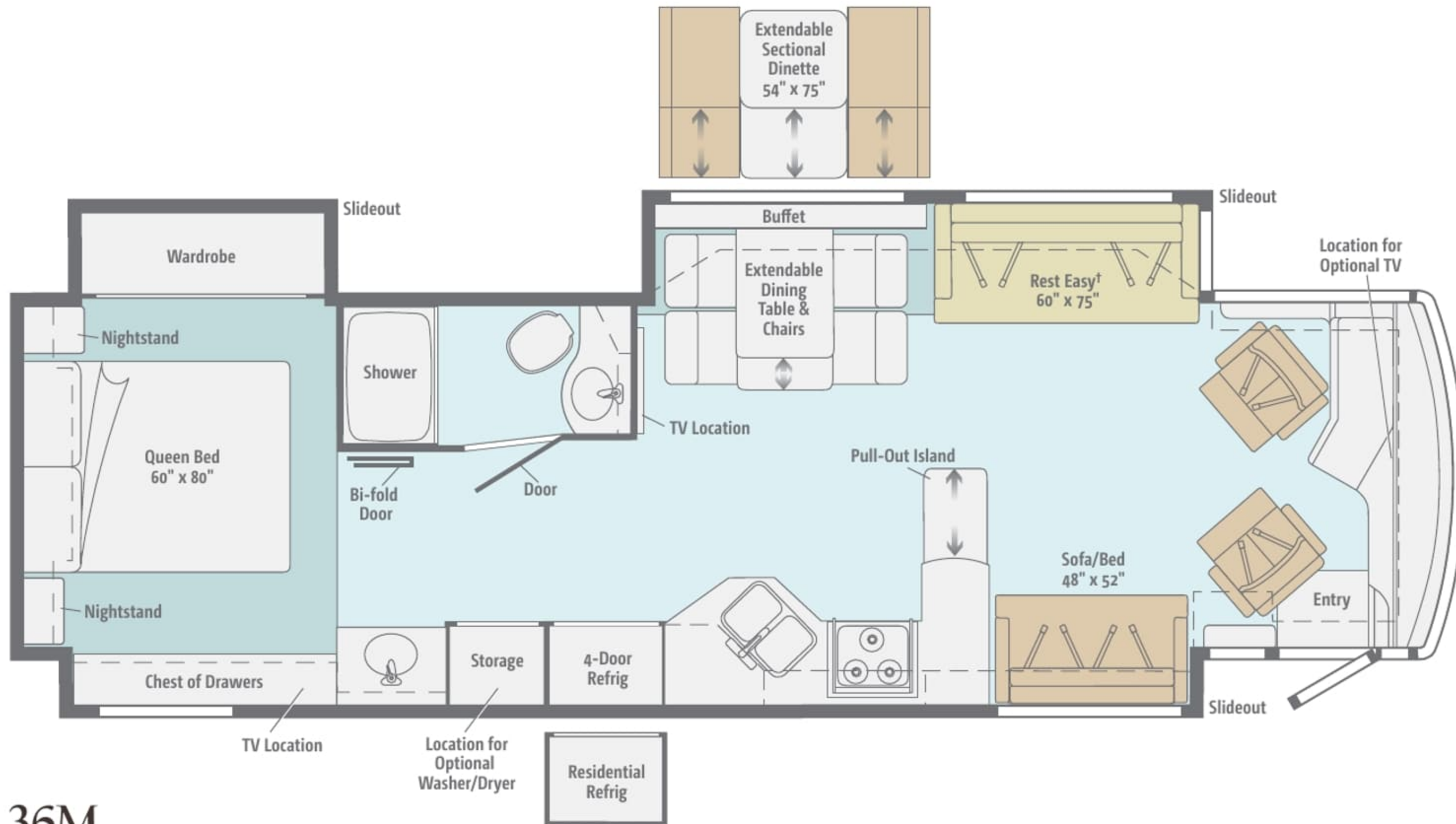


36M

You will find ample room for relaxation in this full-wall slideout floorplan featuring opposing sofas and the extendable dining table/buffet.

† Available with single or dual controls. Dual-control option includes only two seat belts.

Dimensions shown are for sleeping space only and may vary due to styling differences. Dashed lines denote overhead storage areas. Floorplans and specifications are also available online at Goltasca.com.

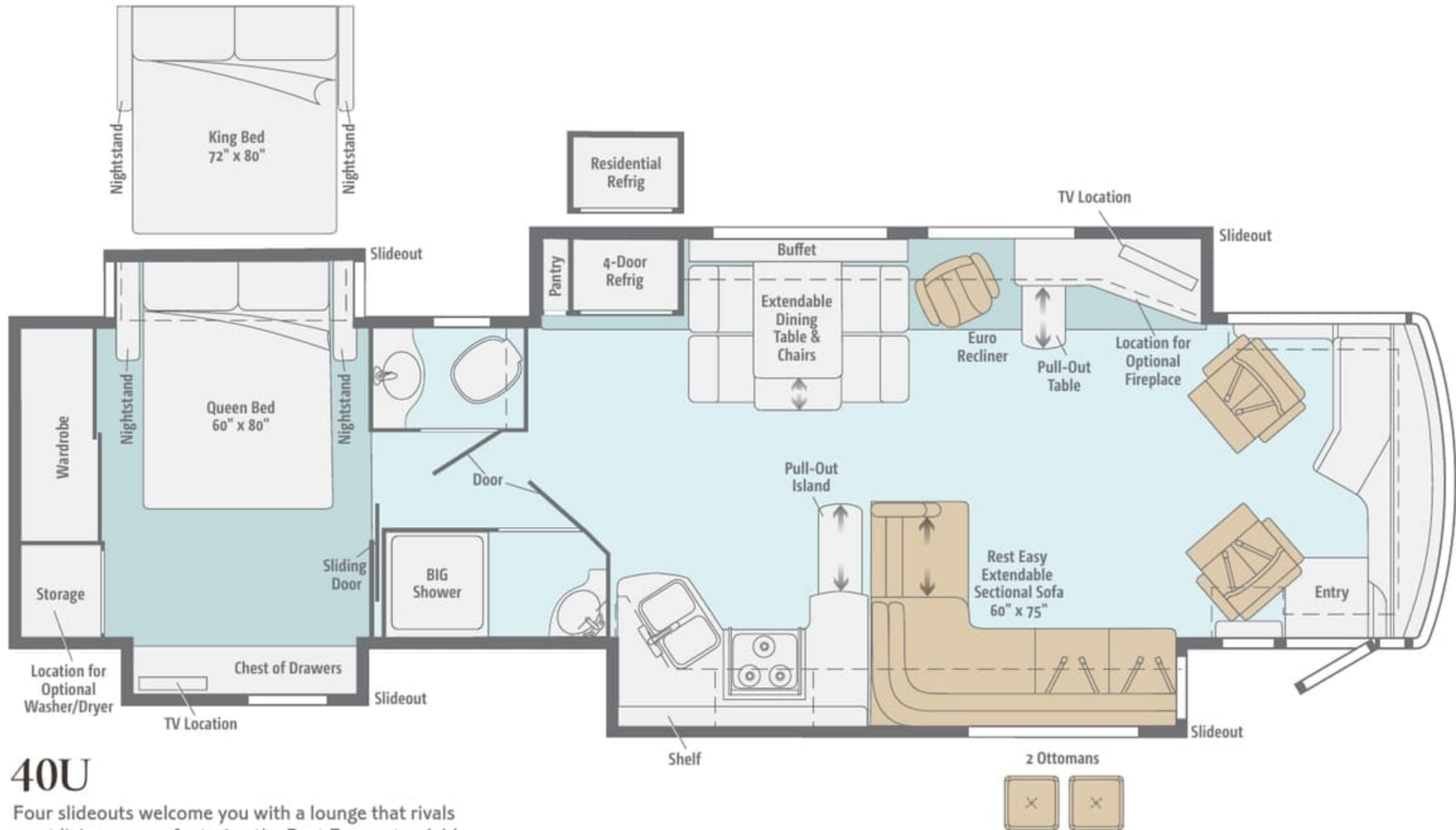


36M

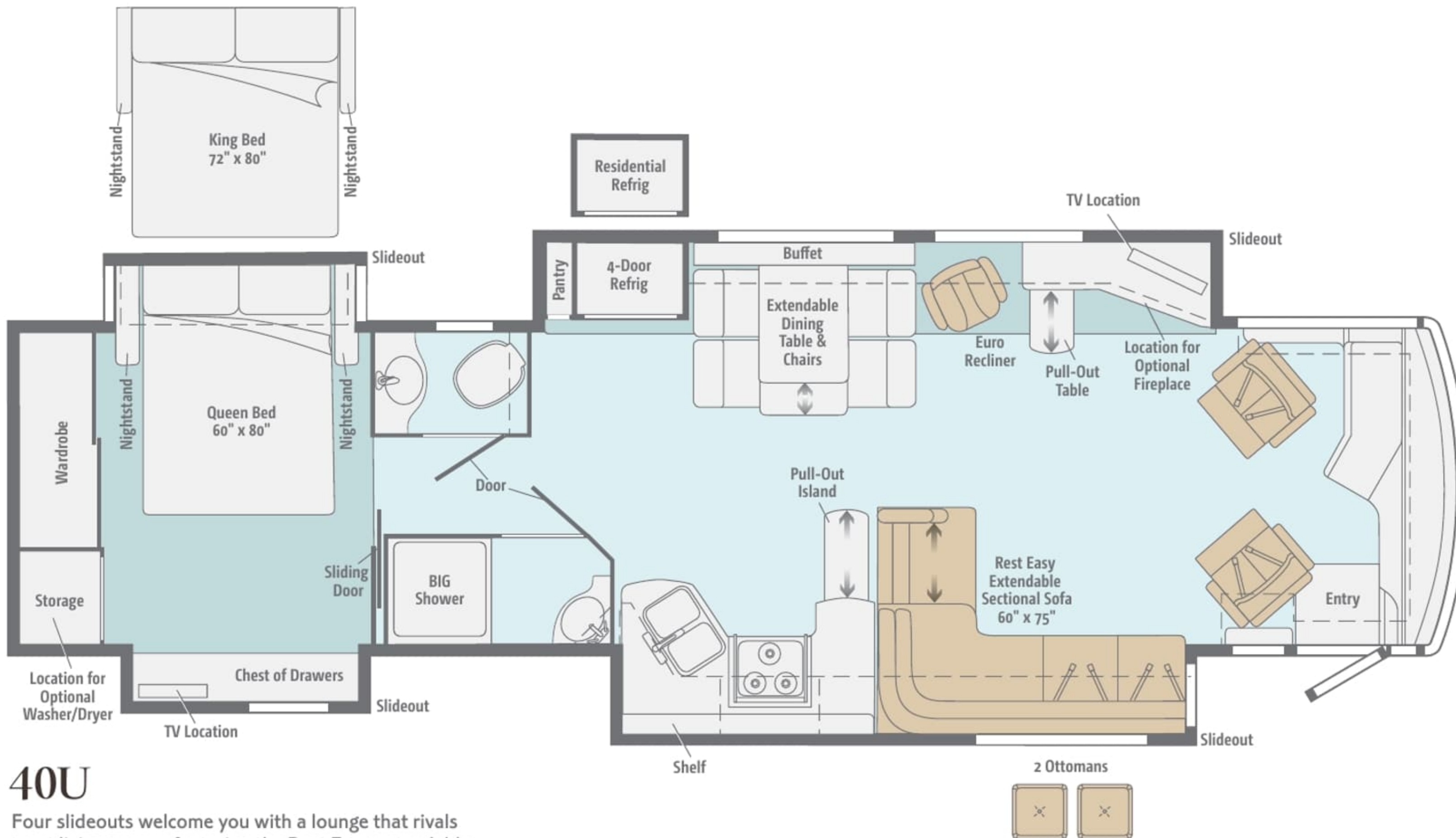
You will find ample room for relaxation in this full-wall slideout floorplan featuring opposing sofas and the extendable dining table/buffet.

[†] Available with single or dual controls. Dual-control option includes only two seat belts.

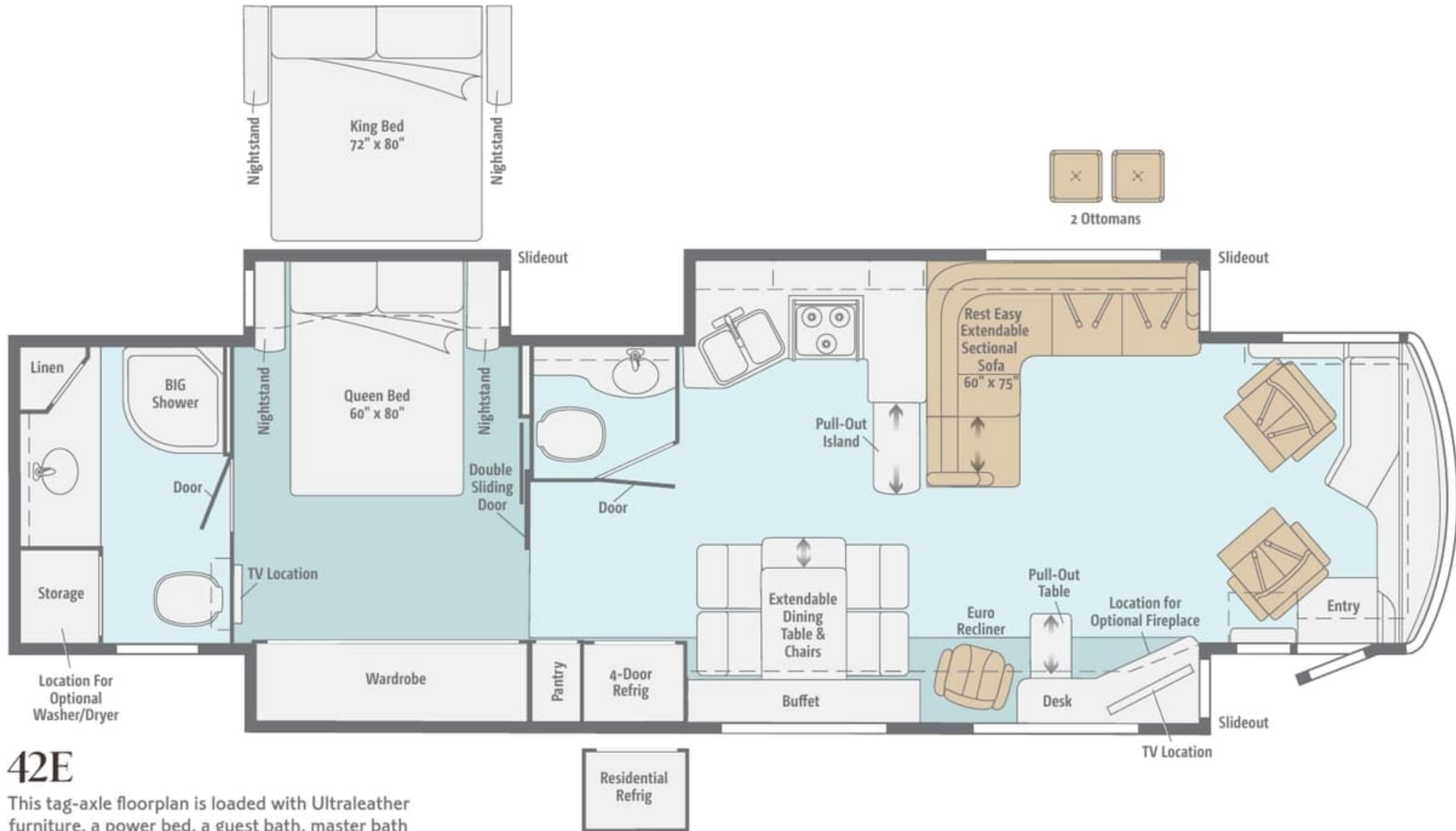
Dimensions shown are for sleeping space only and may vary due to styling differences. Dashed lines denote overhead storage areas. Floorplans and specifications are also available online at Goltasca.com.



Dimensions shown are for sleeping space only and may vary due to styling differences. Dashed lines denote overhead storage areas. Floorplans and specifications are also available online at Goltasca.com.



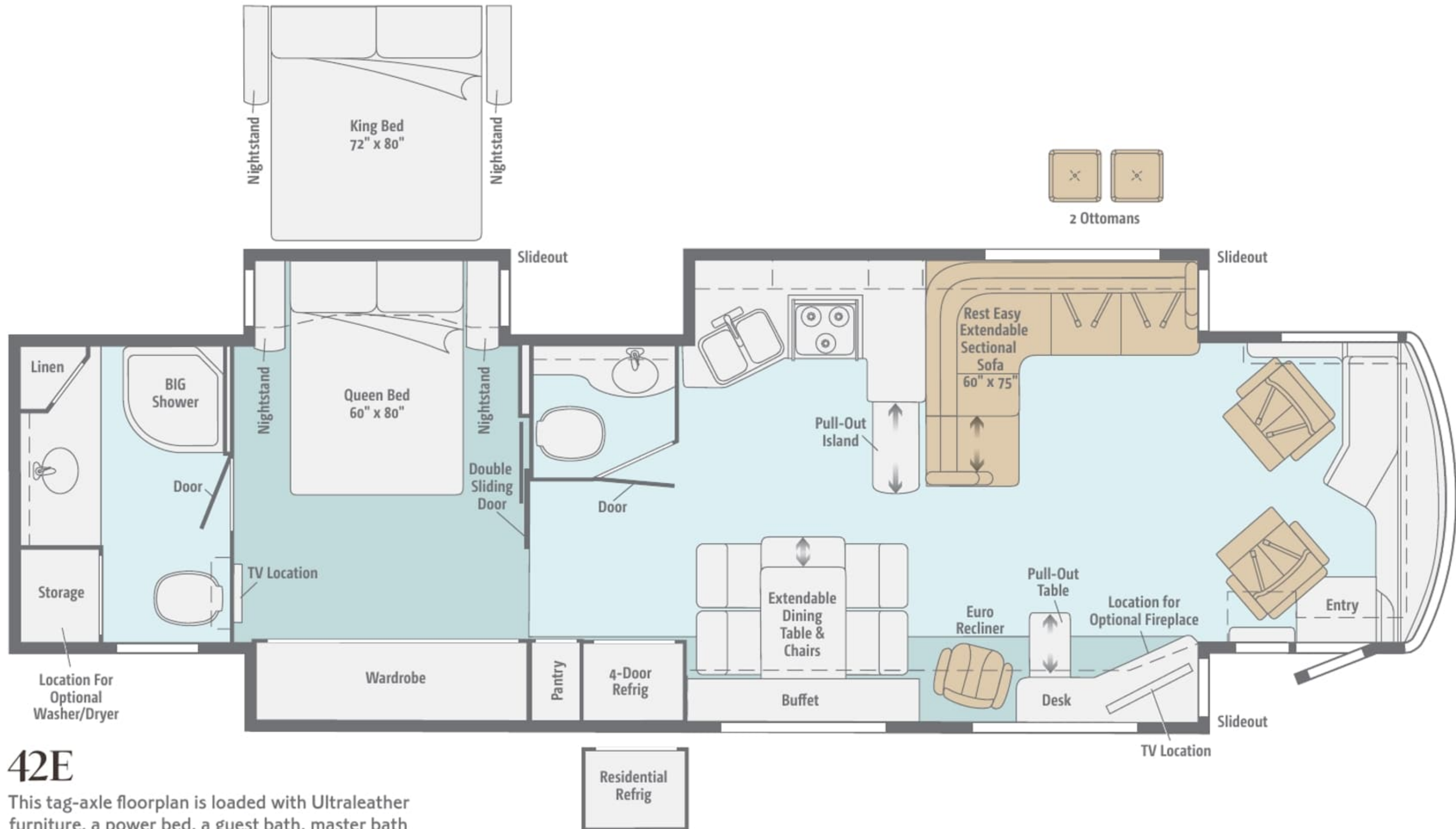
Dimensions shown are for sleeping space only and may vary due to styling differences. Dashed lines denote overhead storage areas. Floorplans and specifications are also available online at Goltasca.com.



42E

This tag-axle floorplan is loaded with Ultraleather furniture, a power bed, a guest bath, master bath and so much more.

Dimensions shown are for sleeping space only and may vary due to styling differences. Dashed lines denote overhead storage areas. Floorplans and specifications are also available online at Goltasca.com.



42E

This tag-axe floorplan is loaded with Ultraleather furniture, a power bed, a guest bath, master bath and so much more.

Your choice from three fabric collections and three wood finishes makes it easy to find a Meridian that perfectly suits your style. Select Ultraleather™ for a soft leather feel that is exceptionally durable and easy to clean.

Athena



Main



Briarwood Ultraleather



Accent



Bedsread



Vinyl Tile - 34B Only



12" x 12" Porcelain Tile



Carpet



Cottage Lane Corian Countertop



Birchwood Pecan Wall Board



Honey Cherry



Forest Cherry



Coffee-Glazed
Vienna Maple

Fabrics and carpets may change without notice or obligation.

Your choice from three fabric collections and three wood finishes makes it easy to find a Meridian that perfectly suits your style. Select Ultraleather™ for a soft leather feel that is exceptionally durable and easy to clean.

Athena



Main



Briarwood Ultraleather



Accent



Bedsread



Vinyl Tile - 34B Only



12" x 12" Porcelain Tile



Carpet



Cottage Lane Corian Countertop



Birchwood Pecan Wall Board



Honey Cherry



Forest Cherry



Coffee-Glazed
Vienna Maple

Fabrics and carpets may change without notice or obligation.

Your choice from three fabric collections and three wood finishes makes it easy to find a Meridian that perfectly suits your style. Select Ultraleather™ for a soft leather feel that is exceptionally durable and easy to clean.

Opal



Main

Parchment Ultraleather

Accent

Bedsread

12" x 12" Porcelain Tile

Carpet



Fossil Corian Countertop

Lotus Silver Wall Board



Honey Cherry

Forest Cherry

Coffee-Glazed
Vienna Maple

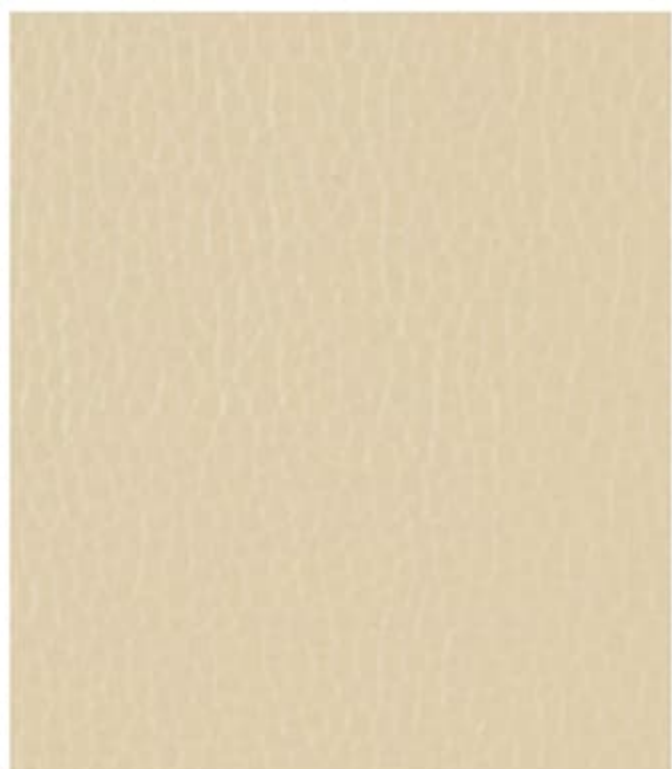
Fabrics and carpets may change without notice or obligation.

Your choice from three fabric collections and three wood finishes makes it easy to find a Meridian that perfectly suits your style. Select Ultraleather™ for a soft leather feel that is exceptionally durable and easy to clean.

Opal



Main



Parchment Ultraleather



Accent



Bedsread



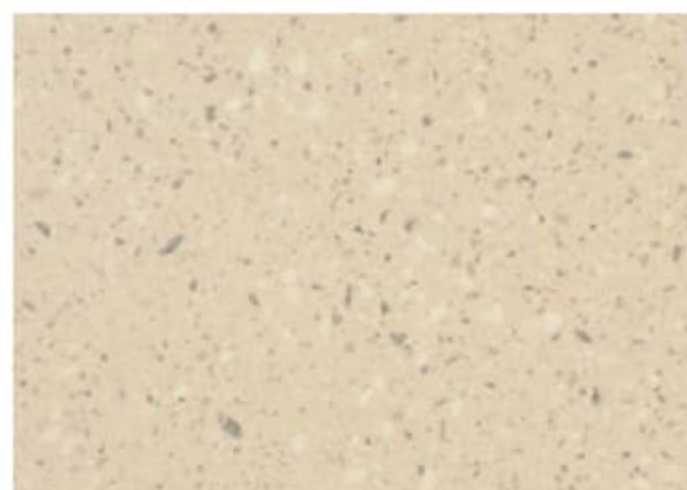
Vinyl Tile - 34B Only



12" x 12" Porcelain Tile



Carpet



Fossil Corian Countertop



Lotus Silver Wall Board



Honey Cherry



Forest Cherry



Coffee-Glazed
Vienna Maple

Fabrics and carpets may change without notice or obligation.

Your choice from three fabric collections and three wood finishes makes it easy to find a Meridian that perfectly suits your style. Select Ultraleather™ for a soft leather feel that is exceptionally durable and easy to clean.

Westcott



Main



Surfside Ultraleather



Accent



Bedspread



Vinyl Tile - 34B Only



12" x 12" Porcelain Tile



Carpet



Cottage Lane Corian Countertop



Waldorf Sierra Wall Board



Honey Cherry



Forest Cherry



Coffee-Glazed
Vienna Maple

Fabrics and carpets may change without notice or obligation.

Your choice from three fabric collections and three wood finishes makes it easy to find a Meridian that perfectly suits your style. Select Ultraleather™ for a soft leather feel that is exceptionally durable and easy to clean.

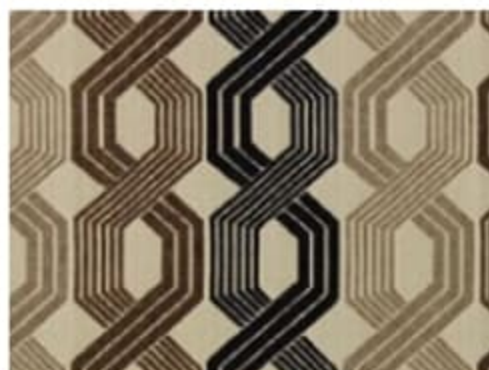
Westcott



Main



Surfside Ultraleather



Accent



Bedspread



Vinyl Tile - 34B Only



12" x 12" Porcelain Tile



Carpet



Cottage Lane Corian Countertop



Waldorf Sierra Wall Board



Honey Cherry



Forest Cherry



Coffee-Glazed
Vienna Maple

Fabrics and carpets may change without notice or obligation.

Six full-body paint styles, with a premier clearcoat finish that brings out the richness of each color, help you stand out from the crowd.



Modern Gray
FULL-BODY PAINT



Dark Spiral Gray
FULL-BODY PAINT

Six full-body paint styles, with a premier clearcoat finish that brings out the richness of each color, help you stand out from the crowd.



Modern Gray
FULL-BODY PAINT



Dark Spiral Gray
FULL-BODY PAINT

Six full-body paint styles, with a premier clearcoat finish that brings out the richness of each color, help you stand out from the crowd.



Deep Mahogany
FULL-BODY PAINT



Light Sandalwood
FULL-BODY PAINT

Six full-body paint styles, with a premier clearcoat finish that brings out the richness of each color, help you stand out from the crowd.



Deep Mahogany
FULL-BODY PAINT



Light Sandalwood
FULL-BODY PAINT

Six full-body paint styles, with a premier clearcoat finish that brings out the richness of each color, help you stand out from the crowd.



Magnesium Gray
FULL-BODY PAINT



Sandstone Bluff
FULL-BODY PAINT

Six full-body paint styles, with a premier clearcoat finish that brings out the richness of each color, help you stand out from the crowd.



Magnesium Gray
FULL-BODY PAINT



Sandstone Bluff
FULL-BODY PAINT

Weights & Measures

	34B	36M	40U	42E
Length	35'7"	37'3"	41'3"	43'6"
Exterior Height¹	12'10"	12'10"	12'10"	12'11"
Exterior Width²	8'5.5"	8'5.5"	8'5.5"	8'5.5"
Exterior Storage³ (cu. ft.)	161	183	246	229
Awning Length	16'	20'	14'6"	20'
Interior Height	7'	7'	7'	7'
Interior Width	8'0.5"	8'0.5"	8'0.5"	8'0.5"
Freshwater Capacity w/Heater⁴ (gal.)	95	95	95	95
Holding Tank Capacity - Black/Gray⁴ (gal.)	46/61	46/61	64/95	71/109
LP Capacity⁵ (gal.)	28	28	28	28
Fuel Capacity (gal.)	100	100	100	100
GCWR⁶ (lbs.)	33,000	42,350	44,320	59,320
GVWR (lbs.)	29,410	32,350	34,320	44,320
GAWR - Front (lbs.)	10,410	12,350	14,320	14,320
GAWR - Rear (lbs.)	19,000	20,000	20,000	30,000
Wheelbase	208"	228"	276"	279" + tag

Chassis

Maxum® Freightliner® Chassis 340-hp Cummins® ISB 6.7L turbo-charged diesel engine (34B)

Maxum Freightliner Chassis 360-hp Cummins ISB XT 6.7L turbo-charged diesel engine (36M)

Maxum Freightliner Chassis 380-hp Cummins ISC 8.3L turbo-charged diesel engine (40U)

Tag-Axle Maxum Freightliner Chassis 400-hp Cummins ISL 8.9L turbo-charged diesel engine (42E)

Allison® 6-speed automatic 2500 MH transmission (34B)

Allison 6-speed automatic 3000 MH transmission (36M, 40U, 42E)

Information display center

Rear radiator

NeWay® front and rear air suspension

160-amp. alternator

Air brakes w/ABS

Engine exhaust brake

Quick-connect air connection w/manual shut off

Automatic hydraulic leveling jacks

7-pin trailer wiring

Trailer Hitch⁶ 10,000-lb. drawbar/500-lb. maximum vertical tongue weight (34B, 36M, 40U)

Trailer Hitch⁶ 15,000-lb. drawbar/1,500-lb. maximum vertical tongue weight (42E)

Stylized aluminum wheels

Cab Conveniences

Cab Seats adjustable armrests, lumbar support and multi-adjustable slide/recline/swivel

Power driver seat

Power passenger seat

Passenger seat w/footrest

RV Radio®/Rearview Monitor System 6.5" LCD touch screen, CD player, weather band, remotes, iPod®/MP3 input, rearview color camera and sideview camera system

Cruise control

12-volt powerpoints

Powered step-well cover

Powered MCD American Duo® solar/blackout roller shades (front windshield)

Defroster fans

MCD American Duo solar/blackout roller shades (driver and passenger windows)

Chassis/house battery radio power switch

Power mirrors w/defrost, turn signal indicator, and sideview camera

TRW® tilt/telescopic steering column w/foot actuated pedal

Map lights

Power door lock w/remotes

C.B. wire prep

Optional Equipment

Infotainment Center/GPS 7" touch screen monitor w/split screen function, passenger-side monitor, turn-by-turn voice guidance, rear and sideview cameras, compass, outside temperature, Bluetooth™, AM/FM/CD/DVD player, remotes, iPod interface connector, USB connection, Sirius® satellite ready

Sirius satellite radio iPod interface connector

+Lounger passenger cab seat w/flip-up workstation

Interior

Dining table/buffet w/40" retractable LCD TV (34B)

40" LCD TV (mid-coach) (36M, 40U, 42E)

Blu-Ray® home theater system

Satellite system ready

Digital TV amplified antenna system

HDMI Matrix central video selection system

Key-activated slideroom master lock switch

MCD American Duo solar/blackout roller shades (lounge, dinette and bedroom)

Soft vinyl ceiling

Accent rope lighting

OnePlace® systems center

Tinted dual-glazed/thermo-insulated/flush-mounted coach windows

Powered ventilator fan (kitchen, bath)

Optional Equipment

Stacked washer and dryer

Electric fireplace (40U, 42E)

King-Dome® HD-ready in-motion satellite dish

King-Dome automatic satellite dish w/dual LNB

Winegard® Trav'ler® automatic multi-satellite antenna

40" LCD TV (front overhead) (36M)

Polished porcelain tile flooring (bedroom) (42E)

Kitchen

Corian® countertops

4-door refrigerator/freezer w/icemaker

Microwave/convection oven w/vented range fan

3-burner range top w/storage below

Corian range and sink covers

Cold water filtration system



Weights & Measures

Length	35'7"	37'3"	41'3"	43'6"
Exterior Height¹	12'10"	12'10"	12'10"	12'11"
Exterior Width²	8'5.5"	8'5.5"	8'5.5"	8'5.5"
Exterior Storage³ (cu. ft.)	161	183	246	229
Awning Length	16'	20'	14'6"	20'
Interior Height	7'	7'	7'	7'
Interior Width	8'0.5"	8'0.5"	8'0.5"	8'0.5"
Freshwater Capacity w/Heater⁴ (gal.)	95	95	95	95
Holding Tank Capacity - Black/Gray⁴ (gal.)	46/61	46/61	64/95	71/109
LP Capacity⁵ (gal.)	28	28	28	28
Fuel Capacity (gal.)	100	100	100	100
GCWR⁶ (lbs.)	33,000	42,350	44,320	59,320
GVWR (lbs.)	29,410	32,350	34,320	44,320
GAWR - Front (lbs.)	10,410	12,350	14,320	14,320
GAWR - Rear (lbs.)	19,000	20,000	20,000	30,000
Wheelbase	208"	228"	276"	279" + tag

34B

35'7"

12'10"

8'5.5"

161

16'

7'

8'0.5"

95

46/61

28

100

33,000

29,410

10,410

19,000

208"

36M

37'3"

12'10"

8'5.5"

183

20'

7'

8'0.5"

95

46/61

28

100

42,350

32,350

12,350

20,000

228"

40U

41'3"

12'10"

8'5.5"

246

14'6"

7'

8'0.5"

95

64/95

28

100

44,320

34,320

14,320

20,000

276"

42E

43'6"

12'11"

8'5.5"

229

20'

7'

8'0.5"

95

71/109

28

100

59,320

44,320

14,320

30,000

279" + tag

Chassis

Maxum® Freightliner® Chassis 340-hp Cummins® ISB 6.7L turbo-charged diesel engine (34B)

Maxum Freightliner Chassis 360-hp Cummins ISB XT 6.7L turbo-charged diesel engine (36M)

Maxum Freightliner Chassis 380-hp Cummins ISC 8.3L turbo-charged diesel engine (40U)

Tag-Axle Maxum Freightliner Chassis 400-hp Cummins ISL 8.9L turbo-charged diesel engine (42E)

Allison® 6-speed automatic 2500 MH transmission (34B)

Allison 6-speed automatic 3000 MH transmission (36M, 40U, 42E)

Information display center

Rear radiator

NeWay® front and rear air suspension

160-amp. alternator

Air brakes w/ABS

Engine exhaust brake

Quick-connect air connection w/manual shut off

Automatic hydraulic leveling jacks

7-pin trailer wiring

Trailer Hitch⁶ 10,000-lb. drawbar/500-lb. maximum vertical tongue weight (34B, 36M, 40U)

Trailer Hitch⁶ 15,000-lb. drawbar/1,500-lb. maximum vertical tongue weight (42E)

Stylized aluminum wheels

Cab Conveniences

Cab Seats adjustable armrests, lumbar support and multi-adjustable slide/recline/swivel

Power driver seat

Power passenger seat

Passenger seat w/footrest

RV Radio®/Rearview Monitor System 6.5" LCD touch screen, CD player, weather band, remotes, iPod®/MP3 input, rearview color camera and sideview camera system

Cruise control

12-volt powerpoints

Powered step-well cover

Powered MCD American Duo® solar/blackout roller shades (front windshield)

Defroster fans

MCD American Duo solar/blackout roller shades (driver and passenger windows)

Chassis/house battery radio power switch

Power mirrors w/defrost, turn signal indicator, and sideview camera

TRW® tilt/telescopic steering column w/foot actuated pedal

Map lights

Power door lock w/remotes

C.B. wire prep

Optional Equipment

Infotainment Center/GPS 7" touch screen monitor w/split screen function, passenger-side monitor, turn-by-turn voice guidance, rear and sideview cameras, compass, outside temperature, Bluetooth™, AM/FM/CD/DVD player, remotes, iPod interface connector, USB connection, Sirius® satellite ready

Sirius satellite radio iPod interface connector

+Lounge passenger cab seat w/flip-up workstation

Interior

Dining table/buffet w/40" retractable LCD TV (34B)

40" LCD TV (mid-coach) (36M, 40U, 42E)

Blu-Ray® home theater system

Satellite system ready

Digital TV amplified antenna system

HDMI Matrix central video selection system

Key-activated slideroom master lock switch

MCD American Duo solar/blackout roller shades (lounge, dinette and bedroom)

Soft vinyl ceiling

Accent rope lighting

OnePlace® systems center

Tinted dual-glazed/thermo-insulated/flush-mounted coach windows

Powered ventilator fan (kitchen, bath)

Optional Equipment

Stacked washer and dryer

Electric fireplace (40U, 42E)

King-Dome® HD-ready in-motion satellite dish

King-Dome automatic satellite dish w/dual LNB

Winegard® Trav'ler® automatic multi-satellite antenna

40" LCD TV (front overhead) (36M)

Polished porcelain tile flooring (bedroom) (42E)

Kitchen

Corian® countertops

4-door refrigerator/freezer w/icemaker

Microwave/convection oven w/vented range fan

3-burner range top w/storage below

Corian range and sink covers

Cold water filtration system



Optional Equipment

3-burner range w/oven

Residential stainless steel French door refrigerator w/ice/water dispenser and bottom freezer drawer (w/2,800-watt inverter and 2 additional 12-volt coach batteries)

Bath

Corian countertop and backsplash

Flexible showerhead

Textured glass shower door

Skylight

Porcelain toilet

Area rug (42E)

Bedroom

26" LCD TV (42E)

32" LCD TV (34B, 36M, 40U)

Queen bed w/innerspring mattress (34B, 36M, 40U)

Powered queen bed w/Ideal Rest® Natural Reserve digital comfort control mattress w/remotes (42E)

Bedsread, pillows, and pillow shams

Optional Equipment

Powered king bed w/Ideal Rest Natural Reserve digital comfort control mattress w/remotes (42E)

King bed w/Ideal Rest Natural Reserve digital comfort control mattress w/remotes (34B, 40U)

King bed w/innerspring mattress (34B, 40U)

Queen Ideal Rest Natural Reserve digital comfort control mattress w/remotes (34B, 36M, 40U)

Ceiling fan

Exterior

Powered patio awning w/wind sensor

KeyOne® lock system

Porch lights

Powered entrance awning

Lighted storage compartments

Driver's side docking/service light

Lighted stepwell

Storage containers w/lids (4)

Movable/removable floor panels in main storage bay

Automatic entrance steps

Auxiliary side lamps

Ladder

Rear mud flaps

Full-width mudguard

Lower front protective mask

Premier clearcoat automotive finish

Optional Equipment

Entertainment Center 32" LCD TV

Slideout storage compartment tray

Heating & Cooling System

TrueAir® Maximum Comfort A/C, 13,500 BTU (2 cooling units 34B, 36M; 3 cooling units 40U, 42E)

A/C heat pumps

Two 20,000 BTU ducted furnaces (34B, 36M)

One 20,000 BTU ducted furnace and one 25,000 BTU ducted furnace (40U, 42E)

Dual-zone thermostat (34B, 36M)

Triple-zone thermostat (40U, 42E)

Electrical System

Service Center lighted, cable input, 50-amp. power cord, QuickPort® shoreline/generator automatic changeover switch, portable satellite hookup

2,000-watt inverter/charger w/remote panel (2,800-watt w/optional French door refrigerator)

8,000-watt Cummins Onan® Quiet Diesel™ generator

Cummins Onan Energy Command™ automatic generator start system

Auxiliary start circuit

AC/DC electrical distribution system

4 Deep-cycle Group 31 marine/RV AGM batteries (6 batteries w/optional French door refrigerator)

Battery disconnect system (coach and chassis)

PowerLine® Energy Management System

Automatic dual-battery charge control

Chassis battery charger/maintainer

Exterior TV jack and AC duplex

Plumbing System

Service Center pressurized city water hookup w/diverter fill, fresh water drain, drainage valves, exterior wash station w/pump switch, holding-tank flushing system, 20' sewer hose, QuickPort, QuickConnect® lights

On-demand water pump

10-gallon water heater 110V/LP gas w/motoraid

TrueLevel™ holding-tank monitoring system

Winterization Package water heater bypass valve and siphon tube

Full-coach water filtration system

LP tank w/gauge

LPG accessory connection (patio area)

Heated holding-tank compartment

Safety

Seat belts

LP, smoke and carbon monoxide detectors

10 BC fire extinguisher

Ground fault interrupter

Fog lamps

High-mount brake lamps

Warranty⁷

12-month/15,000-mile basic warranty⁸

36-month/36,000-mile limited warranty on structure⁸

10-year limited parts-and-labor warranty on roof skin⁸

- 1 The height of each model is measured to the top of the tallest standard feature and is based on the curb weight of a typically equipped unit. The actual height of your vehicle may vary by several inches depending on chassis or equipment variations. Please contact your dealer for further information.
- 2 Meridian floorplans feature a wide-body design – over 96." In making your purchase decision, you should be aware that some states restrict access on some or all state roads to 96" in body width. Before making your purchase decision, you should confirm the road usage laws in the states of interest to you.
- 3 The load capacity of your motor home is designated by weight, not by volume, so you cannot necessarily use all available space when loading your motor home.
- 4 Capacities are based on measurements prior to tank installation. Slight capacity variations can result due to installation applications.
- 5 Capacities shown are tank manufacturer's listed water capacity (W.C.). Actual filled LP capacity is 80% of listing due to overfilling prevention device on tank.
- 6 Actual towing capacity is dependent on your particular loading and towing circumstances, which includes the GVWR, GAWR, and GCWR, as well as adequate trailer brakes. Please refer to the Operator's Manual of your vehicle for further towing information.
- 7 See separate chassis warranty.
- 8 See your dealer for complete warranty information.

NA Not Available

Not all items available in combination. See dealer for details.

Winnebago Industries® continuing program of product improvement makes specifications, equipment, model availability, and prices subject to change without notice. Comparisons to other motor homes are based on the most recent information available at printing.



Optional Equipment

3-burner range w/oven

Residential stainless steel French door refrigerator w/ice/water dispenser and bottom freezer drawer (w/2,800-watt inverter and 2 additional 12-volt coach batteries)

Bath

Corian countertop and backsplash

Flexible showerhead

Textured glass shower door

Skylight

Porcelain toilet

Area rug (42E)

Bedroom

26" LCD TV (42E)

32" LCD TV (34B, 36M, 40U)

Queen bed w/innerspring mattress (34B, 36M, 40U)

Powered queen bed w/Ideal Rest® Natural Reserve digital comfort control mattress w/remotes (42E)

Bedsread, pillows, and pillow shams

Optional Equipment

Powered king bed w/Ideal Rest Natural Reserve digital comfort control mattress w/remotes (42E)

King bed w/Ideal Rest Natural Reserve digital comfort control mattress w/remotes (34B, 40U)

King bed w/innerspring mattress (34B, 40U)

Queen Ideal Rest Natural Reserve digital comfort control mattress w/remotes (34B, 36M, 40U)

Ceiling fan

Exterior

Powered patio awning w/wind sensor

KeyOne® lock system

Porch lights

Powered entrance awning

Lighted storage compartments

Driver's side docking/service light

Lighted stepwell

Storage containers w/lids (4)

Movable/removable floor panels in main storage bay

Automatic entrance steps

Auxiliary side lamps

Ladder

Rear mud flaps

Full-width mudguard

Lower front protective mask

Premier clearcoat automotive finish

Optional Equipment

Entertainment Center 32" LCD TV

Slideout storage compartment tray

Heating & Cooling System

TrueAir® Maximum Comfort A/C, 13,500 BTU (2 cooling units 34B, 36M; 3 cooling units 40U, 42E)

A/C heat pumps

Two 20,000 BTU ducted furnaces (34B, 36M)

One 20,000 BTU ducted furnace and one 25,000 BTU ducted furnace (40U, 42E)

Dual-zone thermostat (34B, 36M)

Triple-zone thermostat (40U, 42E)

Electrical System

Service Center lighted, cable input, 50-amp. power cord, QuickPort®, shoreline/generator automatic changeover switch, portable satellite hookup

2,000-watt inverter/charger w/remote panel (2,800-watt w/optional French door refrigerator)

8,000-watt Cummins Onan® Quiet Diesel™ generator

Cummins Onan Energy Command™ automatic generator start system

Auxiliary start circuit

AC/DC electrical distribution system

4 Deep-cycle Group 31 marine/RV AGM batteries (6 batteries w/optional French door refrigerator)

Battery disconnect system (coach and chassis)

PowerLine® Energy Management System

Automatic dual-battery charge control

Chassis battery charger/maintainer

Exterior TV jack and AC duplex

Plumbing System

Service Center pressurized city water hookup w/diverter fill, fresh water drain, drainage valves, exterior wash station w/pump switch, holding-tank flushing system, 20' sewer hose, QuickPort, QuickConnect®, lights

On-demand water pump

10-gallon water heater 110V/LP gas w/motoraid

TrueLevel™ holding-tank monitoring system

Winterization Package water heater bypass valve and siphon tube

Full-coach water filtration system

LP tank w/gauge

LPG accessory connection (patio area)

Heated holding-tank compartment

Safety

Seat belts

LP, smoke and carbon monoxide detectors

10 BC fire extinguisher

Ground fault interrupter

Fog lamps

High-mount brake lamps

Warranty⁷

12-month/15,000-mile basic warranty⁸

36-month/36,000-mile limited warranty on structure⁸

10-year limited parts-and-labor warranty on roof skin⁸

- 1 The height of each model is measured to the top of the tallest standard feature and is based on the curb weight of a typically equipped unit. The actual height of your vehicle may vary by several inches depending on chassis or equipment variations. Please contact your dealer for further information.
- 2 Meridian floorplans feature a wide-body design – over 96." In making your purchase decision, you should be aware that some states restrict access on some or all state roads to 96" in body width. Before making your purchase decision, you should confirm the road usage laws in the states of interest to you.
- 3 The load capacity of your motor home is designated by weight, not by volume, so you cannot necessarily use all available space when loading your motor home.
- 4 Capacities are based on measurements prior to tank installation. Slight capacity variations can result due to installation applications.
- 5 Capacities shown are tank manufacturer's listed water capacity (W.C.). Actual filled LP capacity is 80% of listing due to overfilling prevention device on tank.
- 6 Actual towing capacity is dependent on your particular loading and towing circumstances, which includes the GVWR, GAWR, and GCWR, as well as adequate trailer brakes. Please refer to the Operator's Manual of your vehicle for further towing information.
- 7 See separate chassis warranty.
- 8 See your dealer for complete warranty information.

NA Not Available

Not all items available in combination. See dealer for details.

Winnebago Industries® continuing program of product improvement makes specifications, equipment, model availability, and prices subject to change without notice. Comparisons to other motor homes are based on the most recent information available at printing.

GOITASCA.COM HAS GONE MOBILE



Learn more about the 2013 Meridian on your computer, smartphone or tablet. Visit GoItasca.com/Meridian for the complete Meridian experience.

PREFERRED CARE PROGRAM

We back our motor homes with best-in-class support both before and after the sale:

- 12-month/15,000-mile basic limited warranty
- 36-month/36,000-mile warranty on structure
- 10-year standard limited parts-and-labor roof skin warranty
- Complimentary 24-hour roadside assistance program



TRIP Saver
FAST TRACK PARTS

- TripSaver® Fast Track Parts guarantees that in-stock warranty parts ship directly to your dealer within 24 hours
- National dealer service network



Premium
ROADSIDE ASSISTANCE

JOIN THE CLUB, JOIN THE FUN

As an Itasca motor home owner, you are invited to join the WIT Club. It's a great way to take full advantage of your new coach and meet fun-loving WIT Club members from across the country who make motor home adventures a way of life.



Members enjoy:

- Caravans and rallies
- Newsletters
- Local and state group activities
- RV travel benefits

For more information, visit WITclub.com.



Grand National Rally

Each year, thousands of Winnebago Industries motor home owners descend upon Forest City, Iowa, for the Grand National Rally. Rally goes connect with old friends and enjoy concerts, tours, activities and more in a weeklong celebration of the motor home lifestyle. Join us in July for a week you'll never forget.



GOITASCA.COM HAS
GONE MOBILE



Learn more about the 2013 Meridian on your computer, smartphone or tablet. Visit Goltasca.com/Meridian for the complete Meridian experience.

PREFERRED CARE PROGRAM

We back our motor homes with best-in-class support both before and after the sale:

- 12-month/15,000-mile basic limited warranty
- 36-month/36,000-mile warranty on structure
- 10-year standard limited parts-and-labor roof skin warranty
- Complimentary 24-hour roadside assistance program



TRIP Saver
FAST TRACK PARTS

- TripSaver® Fast Track Parts guarantees that in-stock warranty parts ship directly to your dealer within 24 hours
- National dealer service network

JOIN THE CLUB, JOIN THE FUN

As an Itasca motor home owner, you are invited to join the WIT Club. It's a great way to take full advantage of your new coach and meet fun-loving WIT Club members from across the country who make motor home adventures a way of life.



Members enjoy:

- Caravans and rallies
- Newsletters
- Local and state group activities
- RV travel benefits

For more information, visit WITclub.com.



Grand National Rally

Each year, thousands of Winnebago Industries motor home owners descend upon Forest City, Iowa, for the Grand National Rally. Rally goers connect with old friends and enjoy concerts, tours, activities and more in a weeklong celebration of the motor home lifestyle. Join us in July for a week you'll never forget.

