

FLEETWOOD RV

2013 CLASS A DIESEL

DISCOVERY®

Discovery



THE JOY OF TRAVEL

When it comes to traveling, some will, some won't, and some make sure they do it right. With contemporary charm and a commanding presence, your Discovery is the envy of the entire camp. Traveling in a Discovery is a celebration, and everyone wants to join the excitement.



DISCOVERY 40E SHOWN IN ANTIQUE COPPER INTERIOR DÉCOR WITH BROWN SUGAR WOOD CABINETRY



WHY BUY DISCOVERY?

Step Up to Luxury Discovery is the brand so many motorhome owners aspire to own. Its power and luxury is truly impressive.

Built for Comfort and Convenience In Discovery, you'll find ergonomically designed spaces that are more livable and comfortable—they just feel right.

Unmistakable Quality Discovery owners have high expectations, and Discovery does not disappoint. The exceptional quality of the components is consistent throughout.

Space for Entertaining The more the merrier, with a galley suitable for preparing big meals, countertop space for party trays and drinks, and plenty of room for guests.

Luxurious Bed and Bath The oversized bedroom suite is built for relaxation, with fine amenities and ample space to spread out.



2013 GRAPHICS AND DÉCOR



Both inside and out, we offer a wide selection of colors, styles and finishes. From the moment you lay your eyes on a Fleetwood RV, the high-style graphics and décor collection welcome you with gracious beauty and contemporary design. We've paid attention to every detail. So wherever you are, you'll feel right at home.



GOLD STARFIRE



PLATINUM FROST



CASHMERE TWIST



CONCORD FROST



COPPER JAVA

	ANTIQUE COPPER	CHESTNUT RAVEN	MOONSTONE KHAKI		CABINETRY
SOFA				WARM HONEY	
ACCENT					
BEDSPREAD					
COUNTERTOP				BROWN SUGAR	
FLOORING					
CARPET					

STANDARD FEATURES AND OPTIONS

STANDARD FEATURES

INTERIOR THROUGHOUT

- 20,000/25,000 BTU Dual Furnaces (36J, 40G)
- 20,000/30,000 BTU Dual Furnaces (40X)
- 25,000/34,000 BTU Dual Furnaces (42A, 42M, 42D, 40E)
- 84" Interior Ceiling Height
- Complete PEX Plumbing System
- Crown Molding
- Manual Double Roller Shades
- Deluxe Roller Bearing, Full-Extension Drawer Guides & Transit-Ship Locks
- Demand Water Pump w/Filter
- Dual Roof-Mounted, High-Efficiency A/C w/Solar Panel
- Hardwood Cabinet Doors/Drawers
- Stackable Washer & Dryer
- Wall Sconces
- Wall Switches (Includes Switches for Ceiling Lights & Vents)
- Water Heater Bypass
- Whole-Coach Water Filtration System
- Wood Finish Return Air Intake for Furnace
- Central Vacuum System
- Water Heater 16-Gallon Output

DRIVER CONVENIENCE

- Adjustable 3-Point Seatbelts at Driver & Front Passenger Seats (w/Adjustable Shoulder Straps)
- Smart Wheel
- Dual Dash Monitors
- Auxiliary Start Circuit
- Battery Disconnect System
- Cruise Control
- Driver-Side Manual Pull-Down Shade
- Villa® Driver/Front Passenger Soft-Touch Captain's Chairs w/Reclining Back/Slide Controls w/Power Driver & Passenger Seat
- Color Back-Up Monitor w/Side Cameras Integrated in Mirrors
- Denso® High-Output Auto A/C Heater Combo
- Passenger Armrest w/Integrated Magazine Rack & Easy-Access Battery Disconnect Switch
- Power Driver/Front Passenger Sun Visors
- Radio Switch Main/Auxiliary Power
- Snack Tray/Service Door at Dash
- Tilt/Telescoping Steering Wheel
- Power Entry Step Cover
- 110-Volt Power Outlet at Dash
- 2 12-Volt Power Outlets at Dash
- Power Passenger Seat Footrest
- Touch Screen Radio w/Built-in GPS

GALLEY

- GE 1 cu.ft. Convection Microwave Oven w/Built-in Range Hood & Light
- 3-Burner, High-Output Cooktop w/Sealed Burners (36J, 40E, 40X, 42A, 42M, 42D)
- 3-Burner, High-Output Range w/Sealed Burners & Oven (40G)
- Adjustable Cabinet Shelves (Select Cabinets)
- Fan-Tastic® Power Roof Vent w/Wall Switch
- Flip-Up Counter Extension (36J)
- Dometic® 12.2 cu.ft. 4-Door Refrigerator w/Icemaker & Water Dispenser
- Galley Faucet w/Pullout Sprayer

- Dinette Base Cabinet with Free-Standing Chairs
- Solid-Surface Countertop w/Sink & Range Covers
- Under-Galley Shelving & Wastebasket
- Window Over Sink (40G, 40X, 40E, 42A)
- Solid-Surface Dinette Tabletop

LIVING ROOM

- Sony® 32" LCD HDTV (40G)
- Sony® 40" LCD HDTV (36J, 40X, 42A, 42M)
- Sony® 46" LCD HDTV (40E)
- Sony® 5.1 Home Theater System w/Built-in AM/FM/DVD & Surround Sound Speakers
- Villa® Residential Seat Styling
- TV Antenna
- Wall-to-Wall High Gloss Porcelain Flooring with Decorative Tile Inserts

BEDROOM

- Sony® 32" LCD HDTV
- Slide-Out Features Overhead Cabinets
- Bedspread w/Décor Pillows
- Coffered Ceiling
- Remote Generator Start Switch
- Queen Pillow Top Mattress
- Rear Wardrobe w/Cedar Lining, Carpeted Floor & Wire Organizer
- Wardrobe Lighting
- Plush Wall-to-Wall Carpet w/Carpet Pad in Bedroom (36J, 40X, 40G, 40E)
- Bedroom Tile (42A, 42M, 42D)

BATHROOM

- A/C Venting
- Cabinet Toe Kicks
- Fan-Tastic® Power Roof Vent w/Wall Switch
- Glass Shower w/Skylight and Low Threshold
- Hardwood Bath Door/Trims
- Make-Up Lights (Some Models)
- Porcelain Toilet w/Water Saver
- Halogen Lighting Over Sink

SAFETY/CONVENIENCE (INTERIOR)

- Carbon Monoxide Detector/Alarm
- Energy Management System (EMS) w/Soft Start
- Fire Extinguisher
- Multiple Seatbelt Locations
- Propane Detector/Alarm
- Smoke Detector/Alarm
- Neutral Loss Protection Standard

EXTERIOR THROUGHOUT

- 120V/12V AC/DC Converter
- 2,000-Watt Pure Sine Wave Inverter w/Remote
- Molded Fiberglass Roof
- 4-Point Automatic Levelers
- 50-Amp Service
- 8.0 KW Onan® Quiet Diesel Generator
- Manual Generator Slide
- Awning Rail/Drip Molding (Both Sides)
- Doorside Patio Receptacle
- DSS Auto-Locating Stationary Satellite Dish
- Dual-Pane Windows w/Screens
- Fiberglass Front Quarter Panels
- Fiberglass Wheel Well Trims
- Full-Body Paint w/Color & Graphics - 5 Choices
- Weather Pro Power Awnings (Patio Awning Includes Wind Sensor)

- Fiberglass Front/Rear Caps w/High-Mounted Taillights
- Water Pump Switch (Multiple Locations)
- Exterior Entertainment Center w/Sony® 32" LCD HDTV and High-Output, Splashproof AM/FM/DVD Sound System
- Heat Pump in 2nd A/C

AUTOMOTIVE

- Aluminum Wheels
- Fog Lamps
- Mud Flaps
- Color Rear & Side Vision Camera System
- Remote Keyless Entry
- Windshield Wipers w/Wet Arm
- Underhood Utility Light
- Large One-Piece Bonded-in Windshield
- Heated Chrome Power Exterior Mirrors w/Turn Signals & Sideview Cameras
- Diamond Shield Clear Front Protective Mask

SAFETY/CONVENIENCE (EXTERIOR)

- 20' Sewer Hose
- ABS Brakes
- Automotive Safety Glass
- Daytime Running Lights
- Easy Sweep Flooring at Entry Step
- Entry Door w/Screen Door & Deadbolt Lock
- Four 6V/Deep-Cycle House Batteries
- Lighted Entry Assist Handle
- Power Entry Step
- Remote/Heated Rear-View Mirrors
- Black Tank San-T-Flush™ System
- Touch Sensor Tank Monitoring System
- Utility Compartment w/Exterior Shower
- Rear Side Marker Lights
- Automatic Generator Start System

STORAGE

- Continuous One-Piece Compartment Bulb Seal
- Pass-Through Storage
- Side Swinging Luggage Doors
- Insulated Aluminum Luggage Doors w/Single Paddle Metal Latches & Corrosion-Resistant Steel Hinges
- Large Compartment Doors
- Lighted Luggage Compartments

OPTIONS

INTERIOR

- CSA Package (Canadian Specs)**

GALLEY

- 3-Burner, High-Output Range w/Sealed Burners & Oven (40E, 40X, 42D, 42M)
- 22 cu. ft. Residential Refrigerator w/Two Additional Batteries & 2800 watt Inverter

LIVING ROOM

- Bedroom Fireplace (42D)
- Living Room Fireplace (42D)
- Villa® Booth Facing Dinette
- U-Shaped Dinette/Sofa (36J, 40G, 40X, 42M, 42D)
- U-Shaped Dinette/Dual FS Recliners (40X)

- Expandable L-Sofa (40X)
- Sony® 32" LCD HDTV in Front Overhead
- Desk (40G)
- Satellite Radio (Subscription Required)

BEDROOM

- Dresser/Vanity w/Second Sink (40G)
- Bunk Beds (42A)
- King Air Mattress
- Queen Bed with Memory Foam Mattress
- King Bed with Memory Foam Mattress

EXTERIOR

- Solar Electric Panel
- 1st Full Bay 90" Slide Tray
- 1st Full Bay 36"/54" Slide Trays
- 2nd Full Bay 90" Slide Tray
- 2nd Full Bay 36"/54" Slide Trays
- Mobile DSS System Satellite Dish
- 3rd Roof A/C (40G, 40X, 40E)
- Exterior Pull Out Grill & Kitchenette
- Window Awning Package

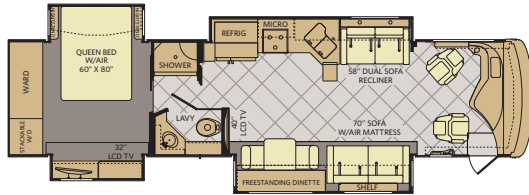
FLEETWOOD ADVANTAGES

- Sony® 32" LCD HDTV (40G)
- Sony® 40" LCD HDTV (36J, 40X, 42A, 42M)
- Sony® 46" LCD HDTV (40E)
- Sony® 5.1 Home Theater System w/Surround Sound
- Sony® In-Dash Stereo
- HDMI Electronic Components and HDMI Cables Throughout Coach
- TV & Home Theater Remote Control Operation
- Built-In, Standard or HDMI, Satellite Receiver AV Input Jack
- Single, Digital, LED Extend Retract Switch That Combines Five (5) Functions Including: Awnings, Step Well Cover & Slide-Out Functions, Into One (1) Easily-accessible Control
- 50-Amp Energy Management System That Monitors Both Legs of Power
- 110AC Outlet in Dash Area
- Full-Wall Slide Technology
- Vacu-Bond® Walls w/Smooth High-Gloss Exterior Fiberglass
- Large One-Piece Bonded-in Windshield
- Pass-Through Storage
- Side Swinging Luggage Doors
- Deluxe Roller Bearing, Full Extension Drawer Guides
- 84" Interior Ceiling Height
- Power Bridge® Chassis Construction (40' Models)
- Power Bridge® II Chassis Construction

**CSA Standards may require substitution or deletion to achieve conformance

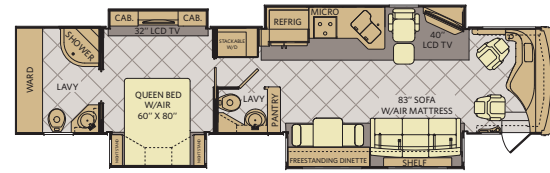
FLOOR PLANS

36J



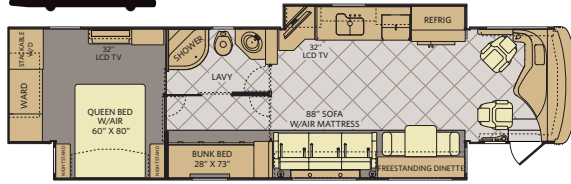
INTERIOR STORAGE CAPACITY: 215 CU. FT. Available options: 087, 144, 635, 830, 853, 854, 856
 EXTERIOR STORAGE CAPACITY: 140 CU. FT.

42D



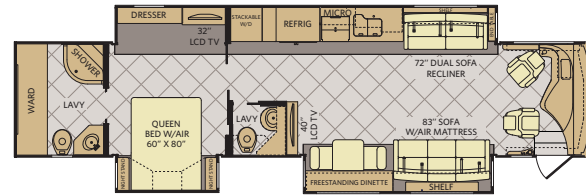
INTERIOR STORAGE CAPACITY: 204 CU. FT. Available options: 087, 113, 139, 140, 144, 635, 830, 853, 854, 856
 EXTERIOR STORAGE CAPACITY: 189 CU. FT.

40G



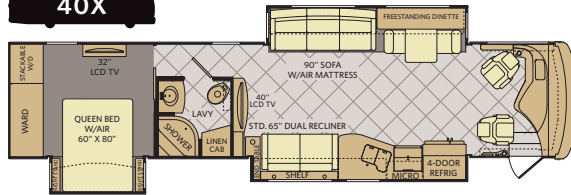
INTERIOR STORAGE CAPACITY: 166 CU. FT. Available options: 087, 144, 635, 830, 853, 854, 856, 867, 878
 EXTERIOR STORAGE CAPACITY: 208 CU. FT.

42M



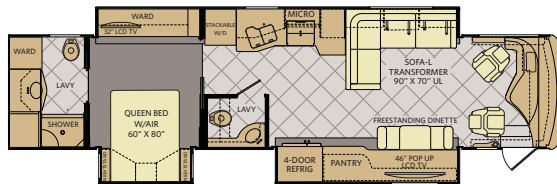
INTERIOR STORAGE CAPACITY: 207 CU. FT. Available options: 087, 113, 144, 635, 830, 853, 854, 856
 EXTERIOR STORAGE CAPACITY: 189 CU. FT.

40X



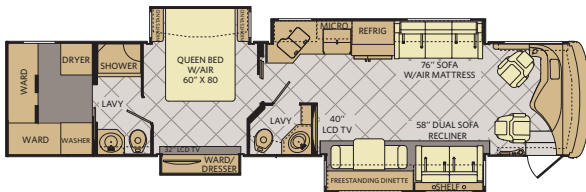
INTERIOR STORAGE CAPACITY: 197 CU. FT. Available options: 087, 113, 144, 191, 627, 635, 830, 853, 854, 856
 EXTERIOR STORAGE CAPACITY: 208 CU. FT.

40E



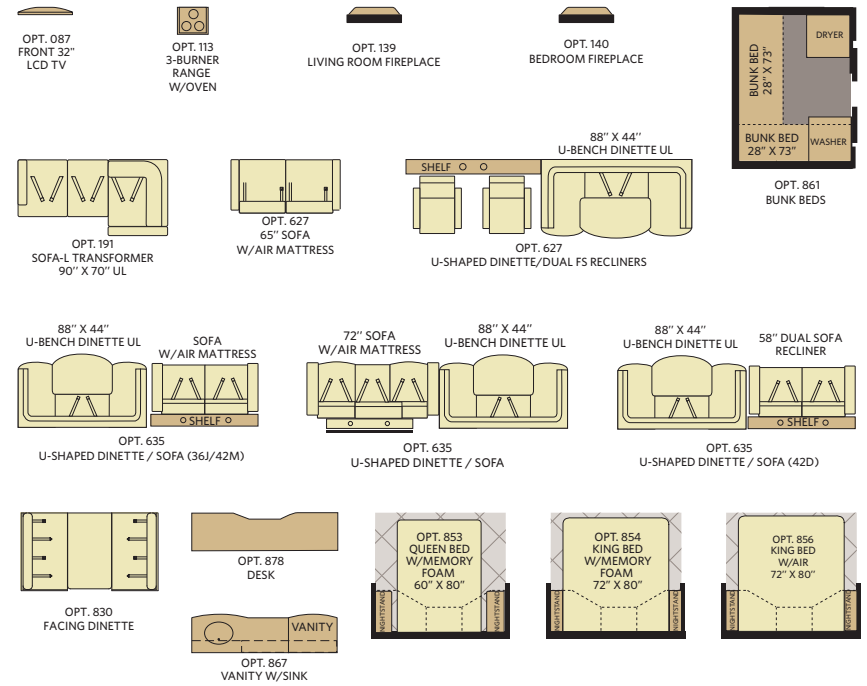
INTERIOR STORAGE CAPACITY: 197 CU. FT. Available options: 087, 113, 144, 853, 854, 856
 EXTERIOR STORAGE CAPACITY: 208 CU. FT.

42A



INTERIOR STORAGE CAPACITY: 152 CU. FT. Available options: 087, 144, 830, 853, 854, 856, 861
 EXTERIOR STORAGE CAPACITY: 189 CU. FT.

FLOOR PLAN OPTIONS



WEIGHTS & MEASUREMENTS

CHASSIS	POWER BRIDGE®				POWER BRIDGE® II		
	36J	40G	40X	40E	42A	42D	42M
MODELS							
Wheelbase (inches)	228"	276"	276"	276"	302"	302"	302"
GVWR (lbs) ¹	32,400	32,400	32,400	32,400	44,700	44,700	44,700
Front GAWR (lbs) ²	12,400	12,400	12,400	12,400	14,700	14,700	14,700
Tag Axle GAWR	N/A	N/A	N/A	N/A	10,000	10,000	10,000
Rear GAWR (lbs) ²	20,000	20,000	20,000	20,000	20,000	20,000	20,000
GCWR (lbs) ³	42,400	42,400	42,400	42,400	54,700	54,700	54,700
Hitch Rating Weight (lbs) ¹	7,500	10,000	10,000	10,000	10,000	10,000	10,000
Tongue Weight (lbs) ⁷	750	1,000	1,000	1,000	1,000	1,000	1,000
Fuel Capacity (gal)	100	100	100	100	150	150	150

POWER BRIDGE® CHASSIS (36'-40' MODELS)

Model: Freightliner® XCM Series
Engine: Cummins® 8.3L ISC
Transmission: Allison® 3000 MH 6-Speed
w/Electronic Shifter

Alternator: Delco Remy 160 Amp
Torque: 1,050 lb-ft @ 1,400 RPM
Horsepower: 380HP

POWER BRIDGE® II CHASSIS (42' MODELS)

Model: Freightliner® XCM Series
Engine: Cummins® 8.3L ISC
Transmission: Allison® 3000 MH 6-Speed
w/Electronic Shifter

Alternator: Leece Neville 170 Amp
Torque: 1,050 lb-ft @ 1,400 RPM
Horsepower: 380HP

DIMENSIONS & CAPACITIES

MODELS	36J	40G	40X	40E	42A	42D	42M
Overall Length (inches) ⁴	37' 7.5"	41' 7.5"	41' 7.5"	41' 7.5"	43' 4"	43' 4"	43' 4"
Overall Height (with A/C)	12' 10"	12' 10"	12' 10"	12' 10"	12' 10"	12' 10"	12' 10"
Overall Width (maximum) ^{5,6}	102"	102"	102"	102"	102"	102"	102"
Interior Height (maximum)	84"	84"	84"	84"	84"	84"	84"
Interior Width (maximum)	96"	96"	96"	96"	96"	96"	96"
Fresh Water Holding Tank (gal)	100	100	100	100	100	100	100
Grey Water Holding Tank (gal)	75	75	75	75	60	60	60
Black Water Holding Tank (gal)	50	50	50	50	40	40	40
Appliance Propane Tank (gal) (WC) ⁷	38.7	38.7	38.7	38.7	28.2	28.2	28.2
Water Heater Tank (gal)	10	10	10	10	10	10	10

Liquid Weight Reference:

Water (gal) = (8.3 lbs/3.8 kgs) Fuel (gal) = (6.1 lbs/2.8 kgs) Propane (gal) = (4.2 lbs/1.9 kgs)

Metric Conversion:

Multiply pounds x 0.453 to obtain kilograms. Multiply gallons x 3.785 to obtain liters.

Multiply liters x 61 to obtain cubic inches.

ADDENDUMS

- GVWR (Gross Vehicle Weight Rating) is the maximum permissible weight of this fully loaded motorhome. The GVWR is equal to or greater than the sum of the (UVW) unloaded vehicle weight plus the (OCCC) occupant cargo-carrying capacity.
- GAWR (Gross Axle Weight Rating) is the maximum permissible loaded weight a specific axle is designed to carry.
- GCWR (Gross Combined Weight Rating) is the value specified by the motorhome manufacturer as the maximum allowable loaded weight of this motorhome with its towed vehicle. Towing and braking capacities may be different. Refer to Fleetwood and chassis manufacturer's manuals for complete information.
- Length measured from front bumper to rear bumper (excludes accessories).
- Excludes safety equipment and awnings.
- Motorhomes feature a body width over 96" which will restrict your access to certain roads. Before purchasing, you should research any state and/or province road laws which may affect your usage.
- Tank manufacturer's listed water capacity (WC). Actual propane capacity is 80% of water listing as required by the safety code.

† The chassis manufacturer recommends the installation of a supplemental brake control system to activate the brakes on the vehicle or trailer you are towing. Hitch receiver ratings expressed are maximum for the hitch receiver installed and may require the purchase of additional equipment that is dependent on the weight of the towed load. Consult with hitch receiver manufacturer for further information.

†† Minimum Towable Load is the available weight, up to GCWR, when the coach is fully loaded to maximum GVWR. However, if the coach is loaded to something less than maximum GVWR, that extra available weight can be added to your Towable Load. For example, if your coach is loaded to 1000lbs less than maximum GVWR, your Towable Load increases accordingly.

* UVW and OCCC are found on the label containing the federal certification tag in each RV.

IMPORTANT—PLEASE READ: Product information, photography and illustrations included in this publication were as accurate as possible at the time of printing. For further product information and changes, please visit our website at www.fleetwoodrv.com or contact your local Fleetwood RV dealer. Prices, materials, design and specifications are subject to change without notice. All weights, fuel, liquid capacities and dimensions are approximate. Fleetwood RV has designed its recreational vehicles to provide a variety of uses for its customers. Each vehicle features optimal seating, sleeping, storage and fluid capacities. The user is responsible for selecting the proper combination of loads (i.e., occupants, equipment, fluids, cargo, etc.) to ensure that the vehicle's capacities are not exceeded.

WHY FLEETWOOD RV?



Quality

There's no cutting corners. Skilled craftsmen build every Fleetwood RV for maximum durability and longevity.



Trust

More people trust Fleetwood RV. After all, we've spent over 60 years perfecting RVs, earning the loyalty of generations of RVers.



Passion

We're truly passionate about the RV lifestyle. Fleetwood RV was founded by RV enthusiasts, and that tradition continues today.



Safety

You've got precious cargo. So we've engineered dozens of innovative safety features into our motor homes to give you more peace of mind.



Service

Help is nearby with 24/7 emergency Fleetwood RV Trusted Roadside Assistance.* And when you need an upgrade or repair, you'll find Fleetwood RV dealers all across North America ready to assist you.



Warranty

Exclusive RV ownercare warranty. See your Fleetwood RV dealer for details.

** All 2013 Fleetwood RV motorhomes include a 1-year emergency Fleetwood RV Roadside Assistance membership. For complete info, see your Fleetwood RV dealer.

www.FleetwoodRV.com



RV OWNERCARE**

Limited one-year/15,000-mile coach warranty and three-year/45,000-mile structural warranty, whichever occurs first, and it is fully transferable for the first 12 months. RV OWNERCARE is one of the RV industry's most comprehensive programs and includes systems, appliances, components and construction, with no deductible and no service charge. RV OWNERCARE coverage is provided by a company that will be around in the future to service your needs. See your nearest Fleetwood RV dealer for a full explanation of benefits and restrictions.

CONTACT US

To locate a dealer near you, visit our website at www.fleetwoodrv.com or call 1-800-322-8216. We can also be contacted at Fleetwood RV Customer Relations, P.O. Box 1007, Decatur, IN 46733.

IMPORTANT—PLEASE READ

Product information, photography and illustrations included in this publication were as accurate as possible at the time of printing. For further product information and changes, please visit our website at www.fleetwoodrv.com or contact your local Fleetwood RV dealer. Prices, materials, design and specifications are subject to change without notice. All weights, fuel, liquid capacities and dimensions are approximate. Fleetwood RV has designed its recreational vehicles to provide a variety of uses for customers. Each vehicle features optimal seating, sleeping, storage and fluid capacities. The user is responsible for selecting the proper combination of loads (i.e., occupants, equipment, fluids, cargo, etc.) to ensure that the vehicle's capacities are not exceeded.



CONFIGURE A COACH THE WAY YOU WANT!

COLORS • FLOOR PLANS • OPTIONS • DÉCOR

WWW.FLEETWOODRV.COM



ALLIED SPECIALTY VEHICLES

FLEETWOOD RV IS AN
ALLIED SPECIALTY VEHICLE COMPANY.



YOUR LOCAL FLEETWOOD RV DEALER IS:

DISCOVERY® 2013

CLASS A DIESEL | **FLEETWOOD RV**



Gold Starfire

EXTERIOR GRAPHICS/INTERIOR DÉCOR



Copper Java



Cashmere Twist



Platinum Frost

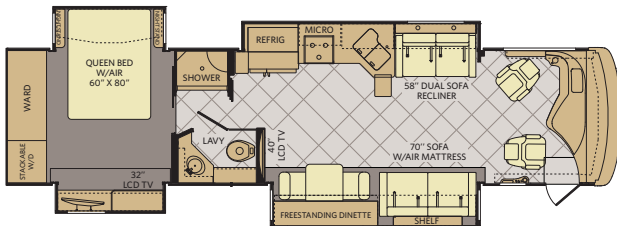


Concord Frost

TOP FEATURES

- 380HP Cummins® ISC 8.3L Engine
- Molded Fiberglass Roof
- Sony® A/V Electronics
- 2,000-Watt Pure Sine Wave Inverter w/ Remote
- 8.0 kW Onan® Quiet Diesel Generator w/ Slide
- High-Gloss Porcelain Tile w/Decorative Tile Inserts
- Polished Solid Surface Countertops
- Hardwood Cabinet Doors/Drawers
- MCD Double Roller Shades
- Side Swinging Luggage Doors
- 84" Interior Ceiling Height
- Optional Exterior Pull-Out Grill and Kitchenette
- Chrome Luggage Door Handles

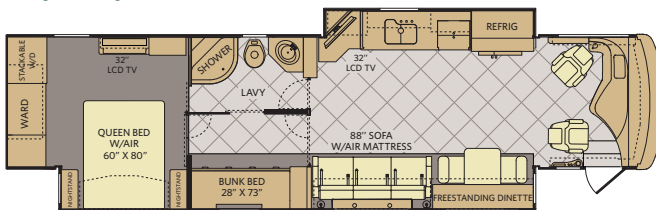
36J



INTERIOR STORAGE CAPACITY: 215 CU. FT.
EXTERIOR STORAGE CAPACITY: 140 CU. FT.

Available options: 087, 144, 635, 830, 853, 854, 856

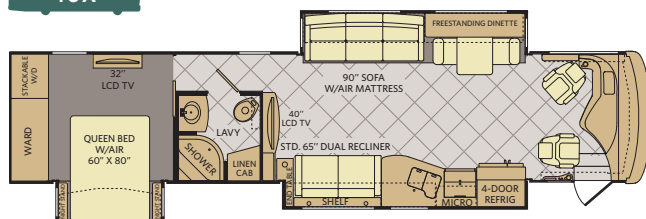
40G



INTERIOR STORAGE CAPACITY: 166 CU. FT.
EXTERIOR STORAGE CAPACITY: 208 CU. FT.

Available options: 087, 144, 635, 830, 853, 854, 856, 867, 878

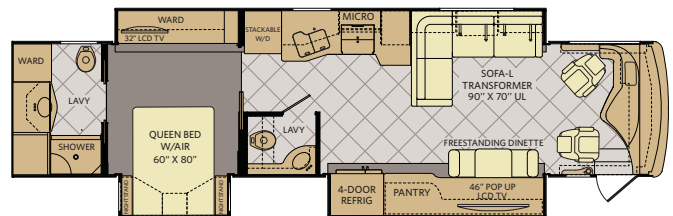
40X



INTERIOR STORAGE CAPACITY: 197 CU. FT.
EXTERIOR STORAGE CAPACITY: 208 CU. FT.

Available options: 087, 113, 144, 191, 627, 635, 830, 853, 854, 856

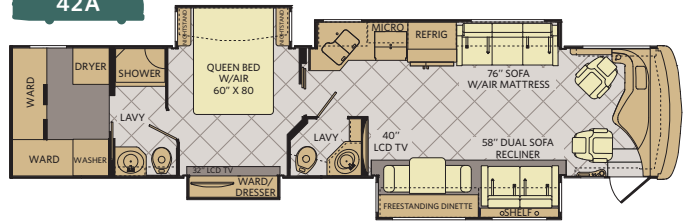
40E



INTERIOR STORAGE CAPACITY: 197 CU. FT.
EXTERIOR STORAGE CAPACITY: 208 CU. FT.

Available options: 087, 113, 144, 853, 854, 856

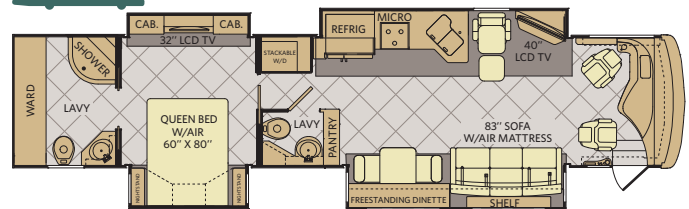
42A



INTERIOR STORAGE CAPACITY: 152 CU. FT.
EXTERIOR STORAGE CAPACITY: 189 CU. FT.

Available options: 087, 144, 830, 853, 854, 856, 861

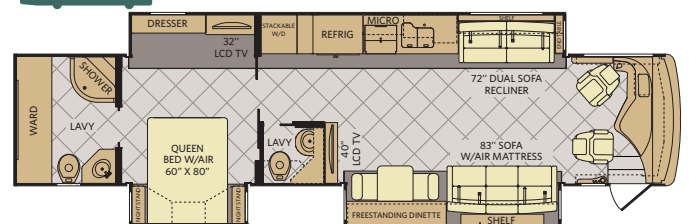
42D



INTERIOR STORAGE CAPACITY: 204 CU. FT.
EXTERIOR STORAGE CAPACITY: 189 CU. FT.

Available options: 087, 139, 140, 144, 830, 853, 854, 856

42M



INTERIOR STORAGE CAPACITY: 207 CU. FT.
EXTERIOR STORAGE CAPACITY: 189 CU. FT.

Available options: 087, 144, 635, 830, 853, 854, 856

WEIGHTS & MEASUREMENTS

CHASSIS	POWER BRIDGE®				POWER BRIDGE® II		
MODELS	36J	40G	40X	40E	42A	42D	42M
Wheelbase (inches)	228"	276"	276"	276"	302"	302"	302"
GVWR (lbs) ¹	32,400	32,400	32,400	32,400	44,700	44,700	44,700
Front GAWR (lbs) ²	12,400	12,400	12,400	12,400	14,700	14,700	14,700
Tag Axle GAWR	N/A	N/A	N/A	N/A	10,000	10,000	10,000
Rear GAWR (lbs) ²	20,000	20,000	20,000	20,000	20,000	20,000	20,000
GCWR (lbs) ³	42,400	42,400	42,400	42,400	54,700	54,700	54,700
Hitch Rating Weight (lbs) ^{1,††}	7,500	10,000	10,000	10,000	10,000	10,000	10,000
Tongue Weight (lbs) ¹	750	1,000	1,000	1,000	1,000	1,000	1,000
Fuel Capacity (gal)	100	100	100	100	150	150	150

POWER BRIDGE® (36' - 40' MODELS)

Model: Freightliner® XCM Series
Engine: Cummins® 8.3L ISC
Transmission: Allison® 3000 MH 6-Speed w/Electronic Shifter

Alternator: Delco Remy 160 Amp
Torque: 1,050 lb-ft @ 1,400 RPM
Horsepower: 380HP

POWER BRIDGE® II (42' MODELS)

Model: Freightliner® XCM Series
Engine: Cummins® 8.3L ISC
Transmission: Allison® 3000 MH 6-Speed w/Electronic Shifter

Alternator: Leece Neville 170 Amp
Torque: 1,050 lb-ft @ 1,400 RPM
Horsepower: 380HP

DIMENSIONS & CAPACITIES

MODELS	36J	40G	40X	40E	42A	42D	42M
Overall Length ⁴	37' 7.5"	41' 7.5"	41' 7.5"	41' 7.5"	43' 4"	43' 4"	43' 4"
Overall Height (with A/C)	12' 10"	12' 10"	12' 10"	12' 10"	12' 10"	12' 10"	12' 10"
Overall Width (maximum) ^{5, 6}	102"	102"	102"	102"	102"	102"	102"
Interior Height (maximum)	84"	84"	84"	84"	84"	84"	84"
Interior Width (maximum)	96"	96"	96"	96"	96"	96"	96"
Fresh Water Holding Tank (gal)	100	100	100	100	100	100	100
Grey Water Holding Tank (gal)	75	75	75	75	60	60	60
Black Water Holding Tank (gal)	50	50	50	50	40	40	40
Appliance Propane Tank (gal) (WC) ⁷	38.7	38.7	38.7	38.7	28.2	28.2	28.2
Water Heater Tank (gal)	10	10	10	10	10	10	10

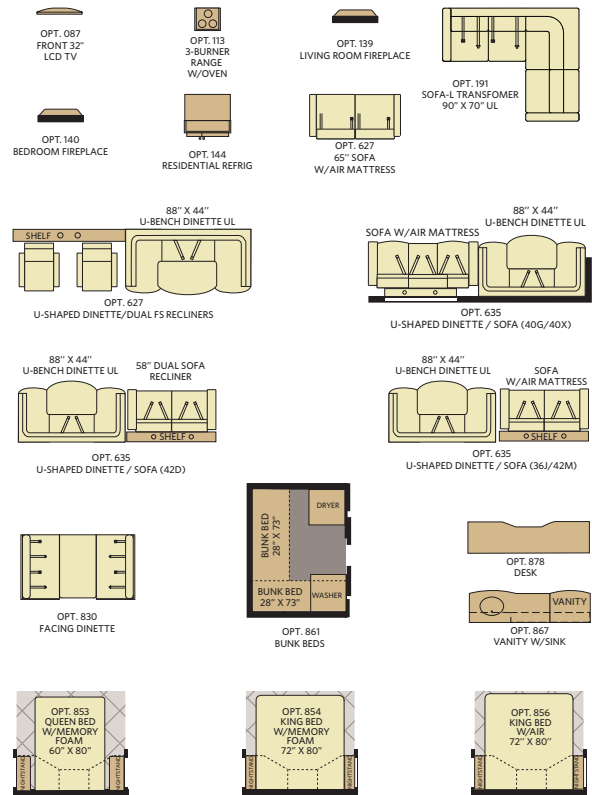
Liquid Weight Reference:

Water (gal) = (8.3 lbs/3.8 kgs) Fuel (gal) = (6.1 lbs/2.8 kgs) Propane (gal) = 4.2 lbs/1.9 kgs

Metric Conversion:

Multiply pounds x 0.453 to obtain kilograms. Multiply gallons x 3.785 to obtain liters. Multiply liters x 61 to obtain cubic inches.

OPTIONS



CONFIGURE A COACH THE WAY YOU WANT!

COLORS • FLOOR PLANS • OPTIONS • DÉCOR

www.FLEETWOODRV.COM



FLEETWOOD RV IS AN ALLIED SPECIALTY VEHICLE COMPANY.

Addendums

- GVWR (Gross Vehicle Weight Rating) is the maximum permissible weight of this fully loaded motorhome. The GVWR is equal to or greater than the sum of the (UVW) unloaded vehicle weight plus the (OCCC) occupant cargo-carrying capacity*.
- GAWR (Gross Axle Weight Rating) is the maximum permissible loaded weight a specific axle is designed to carry.
- GCWR (Gross Combined Weight Rating) is the value specified by the motorhome manufacturer as the maximum allowable loaded weight of this motorhome with its towed vehicle. Towing and braking capacities may be different. Refer to Fleetwood and chassis manufacturer's manuals for complete information.
- Length measured from front bumper to rear bumper (excludes accessories).
- Excludes safety equipment and awnings.
- Motorhomes feature a body width over 96" which will restrict your access to certain roads. Before purchasing, you should research any state and/or province road laws which may affect your usage.
- Tank manufacturer's listed water capacity (WC). Actual propane capacity is 80% of water listing as required by the safety code.

† The chassis manufacturer recommends the installation of a supplemental brake control system to activate the brakes on the vehicle or trailer you are towing. Hitch receiver ratings expressed are maximum for the hitch receiver installed and may require the purchase of additional equipment that is dependent on the weight of the towed load. Consult with hitch receiver manufacturer for further information.

* UVW and OCCC are found on the label containing the federal certification tag in each RV.

†† The Minimum Towable Load of this vehicle is the available weight capacity, up to GCWR, when the coach is fully loaded to maximum GVWR. However, if the coach is loaded to something less than maximum GVWR, that extra available weight capacity can be added to your Towable Load. For example, if your coach is loaded to 1000lbs less than maximum GVWR, your Towable Load increases accordingly. Do not exceed the hitch rating weight, GVWR or GCWR.

IMPORTANT—PLEASE READ

Product information, photography and illustrations included in this publication were as accurate as possible at the time of printing. For further product information and changes, please visit our website at www.fleetwoodrv.com or contact your local Fleetwood RV dealer. Prices, materials, design and specifications are subject to change without notice. All weights, fuel, liquid capacities and dimensions are approximate. Fleetwood RV has designed its recreational vehicles to provide a variety of uses for customers. Each vehicle features optimal seating, sleeping, storage and fluid capacities. The user is responsible for selecting the proper combination of loads (i.e., occupants, equipment, fluids, cargo, etc.) to ensure that the vehicle's capacities are not exceeded.

CONTACT US

To locate a dealer near you, visit our website at www.fleetwoodrv.com or call 1-800-322-8216. We can also be contacted at Fleetwood RV Customer Relations, P.O. Box 1007, Decatur, IN 46733.



** All 2013 Fleetwood RV motorhomes include a 1-year emergency Fleetwood RV Trusted Roadside Assistance membership. For complete info, see your Fleetwood RV dealer.

©2012 Fleetwood RV Inc. Printed in USA. Inventory Control Number DIS13F1, 05/12. Model Year 2013, First Edition.